



Alnet Systems Inc.

NetStation:

Open Platform
Network Video Surveillance System



NetHybrid:

Open Platform
Hybrid Video Surveillance System



NetHybrid HD:

Open Platform
Hybrid Video Surveillance System HD-SDI



CMS Professional:

Advanced Powerful
Remote Client Software



CMS Mobile:

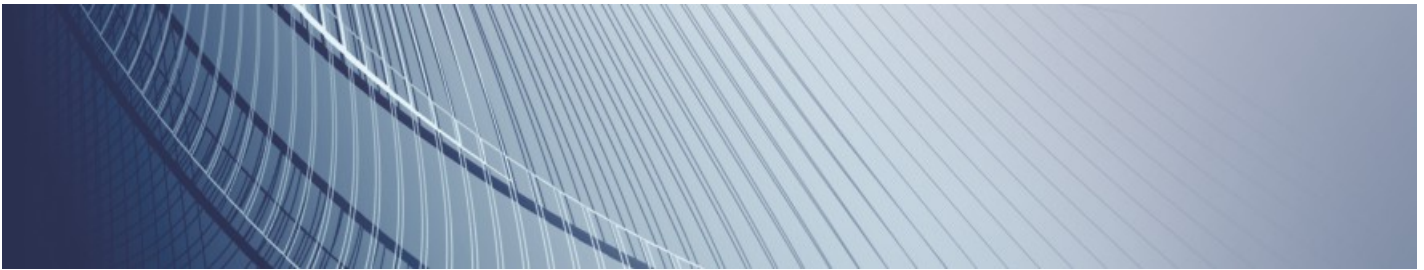
Video Client
Software For Mobile Devices





Alnet Systems:

Professional Open Platform Video Management Solutions



About Us

Alnet Systems Inc., for nearly 10 years has engaged in developing digital video recording software for CCTV systems. The first line of products named VDR-S series has been installed on over 70,000 systems worldwide.

Many years of experience allows us to create reliable solutions that are also very functional. For over 7 years we have been developing systems designed for IP cameras.

Currently offered are hybrid systems named NetHybrid as well as strictly IP systems named NetStation, both are "open platform" types. NetHybrid and NetStation are systems for the most demanding customers who seek reliable and professional solutions.

Our engineers are constantly working on developing features to meet new market demands. Intensive development, focused on intelligent image analysis will soon bring us to a new era in video security systems.



NetStation:

Open Platform Network Video Surveillance System



NetStation open platform software was developed to be implemented on installations consisting from four to hundreds of IP cameras. Full scalability of the software allows you to fine-tune the size of the system to meet customer needs.

Thanks to an extensive network possibilities NetStation software is perfectly suited for surveillance sites scattered across large areas. Constant updates provide the guarantee that you always have at your disposal the latest solutions in line with current market trends.

Thanks to the open software architecture, the user is free to choose from nearly 1,000 integrated IP cameras from all major manufacturers. The software has been developed for over 7 years and works on about 70 000 installations worldwide, which confirms the high reliability and functionality.

NetStation software is compatible with the newest IP camera solutions utilizing the HDTV standard. Mega-Pixel IP Cameras which provide video at resolutions, several times greater than PAL/NTSC, which will be a common industry standard in all future installations. The use of Mega-Pixel cameras will change the quality and reliability of CCTV systems.



The Advanced Client Software named CMS allows for an unlimited amount of remote connections to access live video streams, recorded video, and many other functions from one location. There are also clients available for Mobile Devices. The application is considered one of the most advanced and expanded application for monitoring CCTV systems. The application can be used on devices equipped with SymbianOS / iOS / Android / BlackBerry and Windows Mobile Operating Systems.

System specification:

Up to 512 cameras in one system

Up to 32 cameras in one server

Support for Video Analytics

Advanced motion detection

Bookmark Function

Advanced archive browser

PTZ control

Digital zoom

Alarm Inputs and outputs support

Advanced Scheduler

Easy to use GUI

Multi level e-maps

Back-up function

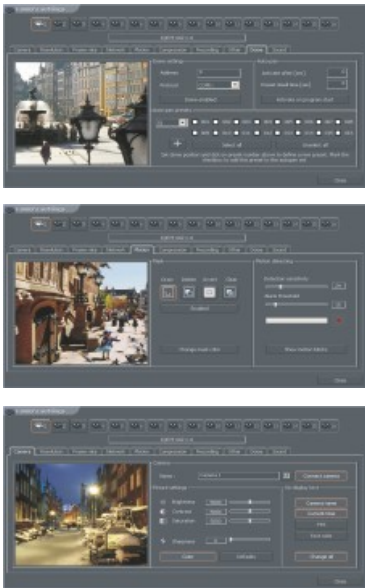
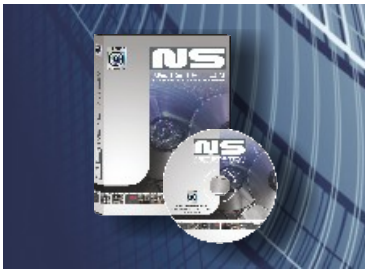
Powerful CMS Client software

Multi stream support

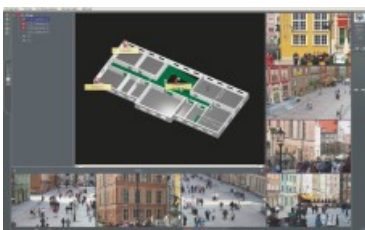
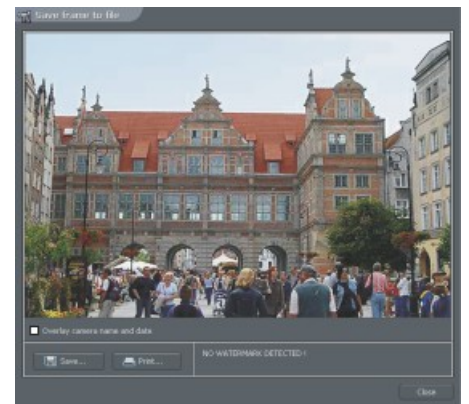
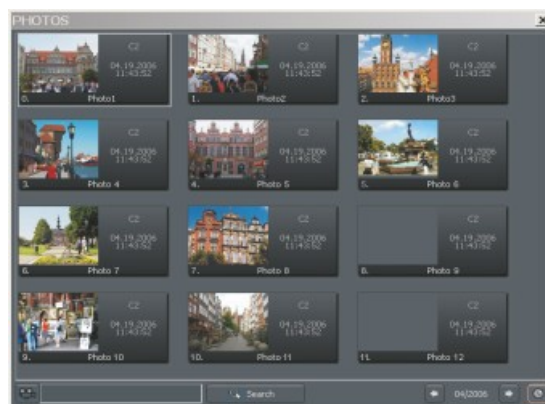
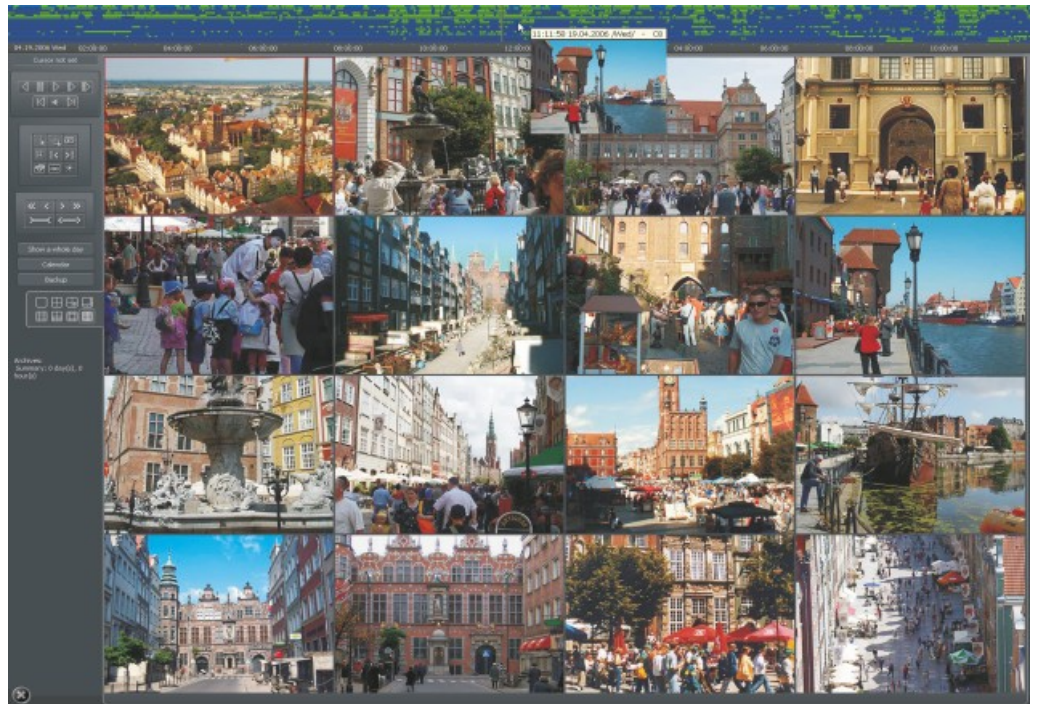
Multi layer user accounts



The Archive menu in the NetStation system is highly advanced and simultaneously very simple to operate, while reviewing and managing archived video. Recording for each camera channel in the archives creates its own timeline, which clearly shows all the events that occurred to initiate recording. This creates an easy and functional way to localize and view events that occurred. The recordings are shown the same way, using a timeline in the archives. In the archives, as the operator rolls over the timeline, a new preview window is displayed, where fast playback either forward or backward can be initiated. The speed of the playback using the roll over function depends on the speed that the mouse is moved at across the timeline. The Archive Control Panel speed settings provides for functions such as forward/reverse playback with three speed selections, normal, 2x and 4x. Searching for specific motion areas is an advanced feature, which allows for better analyzing of specific areas of recorded video. All events that are found can be marked with bookmarks, for later review, and easy access. Bookmarks can be placed manually in the archives, they can be user initiated, or can be done automatically upon Input Activation.



The Camera Configuration menu allows for the precise configuration of all camera parameters on all individual cameras. Multilevel menus allow for easy to understand tools that are available for each camera. Motion detection is one of the tools available in the camera configuration, where sensitivity and object masking are essential for each camera, especially for areas with constant motion.



A specialized photo album stores screenshots of cameras where they can be watermarked, and printed with ease from specific events. The intuitive backup function allows for fast and trouble free ways to backup your archived data to any device e.g. DVD, CD, or network storage. Also options such as backing up to video files e.g. AVI, this way they can be played back on most PC's without additional software having to be installed.