

NetStation

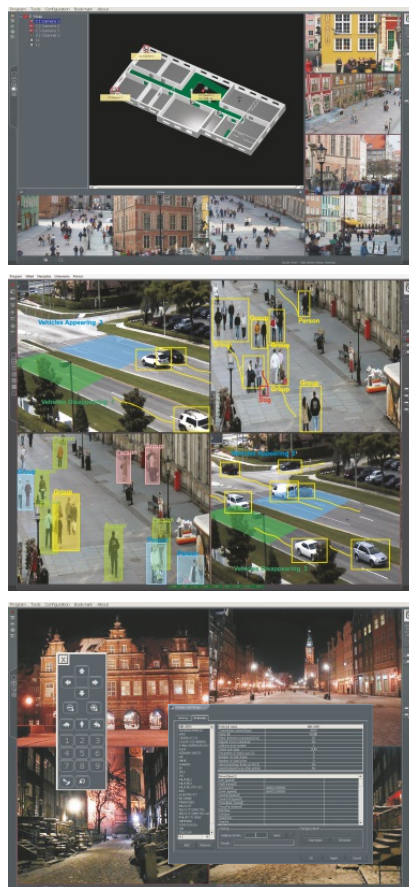
Network digital video CCTV surveillance software



NetStation is an advanced digital CCTV video surveillance software designed for systems of any complexity and size. Flexible scalability - per single IP channel - allows precise system adjustment to meet customer needs. Maximal IP channel number per server is 128 (4 Netstation_32 applications).

For remote surveillance, the CMS Professional and CMS Mobile software is provided free of charge.

CMS Professional software is an advanced tool with practically unlimited configuration capabilities, supporting any number of remote servers and cameras.



Key features:

128 IP channels per one server

Unlimited channels in multi-server system

Video Content Analysis support

Advanced motion detection

Bookmarks in recordings

Fast preview in recordings

Digital zoom

Advanced task scheduler

Multilayer e-maps

Advanced backup

Multistream support

Multi-level user account management

POS integration



[youtube.com/Alnetsystems](https://www.youtube.com/Alnetsystems)

NetStation software configuration:

NetStation 4 + number of additional IP channels

single channel scalability

minimum number of IP channels - 4

maximum number of IP channels - 32 in single NetStation application.

Example configuration:

NetStation 24

System supports 24 IP channels.

Possibility of installing up to 4 Netstation 32 applications, which results in 128 IP channels support in total.



NetHybrid

Hybrid CCTV video surveillance system



NetHybridHD supports simultaneous use of analog, IP and HD-SDI cameras. This solution gives the user maximum configuration capabilities and allows expansion of any video technology. Application functionality is similar to NetStation software, which makes both systems fully compatible between each other, allowing simultaneous use in any distributed system. Remote surveillance and monitoring is provided by CMS Professional and CMS Mobile applications.

System configuration:

NetHybrid HD x/ yIP/ zHD

x- analog channels 8, 16, 24, 32. Recording: H.264, D1 @ 25 FPS per channel; audio channel available for each video channel.

y - IP channels 4, 8, 12, 16

z - HD-SDI channels 4, 8, 12, 16

Maximum total analog, IP, HD-SDI channel number can not exceed 32 for single system.

Example configuration:

NetHybrid 8/8IP/4HD

System includes 8 analog channels (PCIe card), 8 IP channels and 4 HD-SDI channels (PCIe card).

