



CMS Professional 4

User's manual

User's manual version 1.0 (October 2016)

This manual applies to program version CMS PROFESSIONAL 4.0.

1. Contents

2. Introduction	3
3. First run	3
4. Configuration.....	8
5. Main window.....	14
6. View mode.....	15
7. ZOOM mode.....	16
8. PTZ mode.....	18

2. Introduction

We present to you next version of CMS PROFESSIONAL system with many new functions and modules. Many of these changes is the effect of our cooperation with you and our partners. Part of them are our ideas which extend capabilities of digital video recording system. Please pay your attention to the possibilities that CMS PROFESSIONAL 4 (CMS 4 in short) brings to life and check how much did we changed the system, which point whole new direction of our evolution as NVR supplier.

3. First run

At the first run of the application it is necessary to set up it's parameters using CMS Wizard, which starts immediately after CMS 4 installation.

It is done only once. You may run the CMS Wizard manually from Menu Start -> Programs -> ALNET SYSTEMS -> CMS -> Tools -> CMS 4 Wizard in order to change the configuration parameters.

Welcome

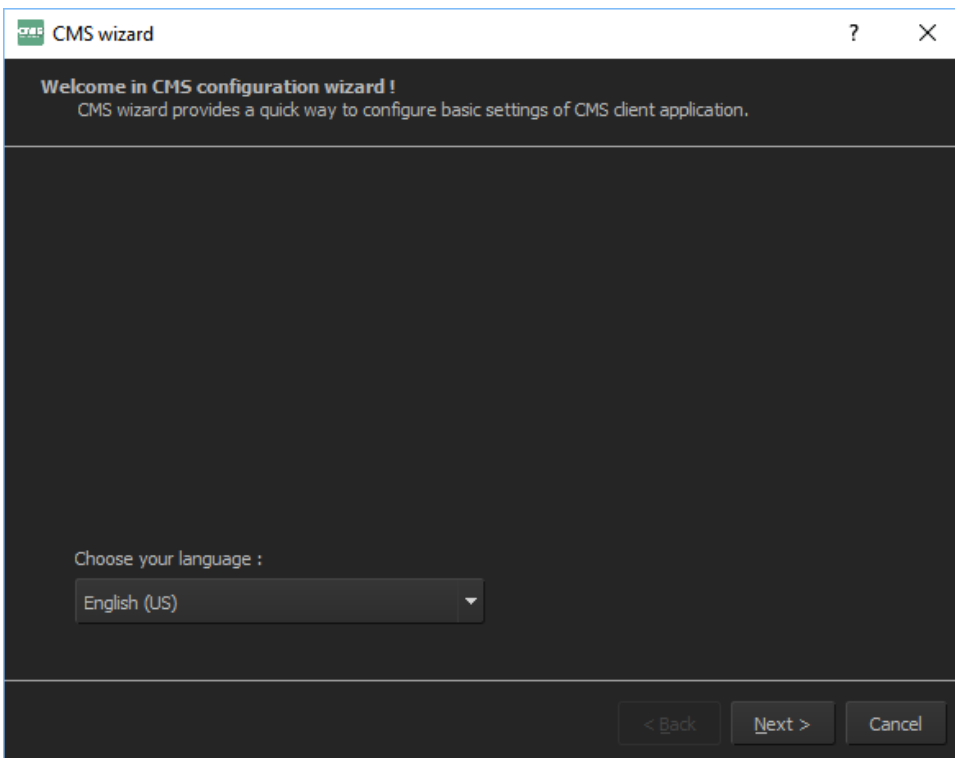


Figure 1. Installation Wizard

- ✓ Choose your language

In the first step, please select your language. Right now you can choose from 5 different languages: English, Polish, Chinese, Italian and Russian.

Administrator password

You may protect your configuration settings by selecting checkbox and entering the password.

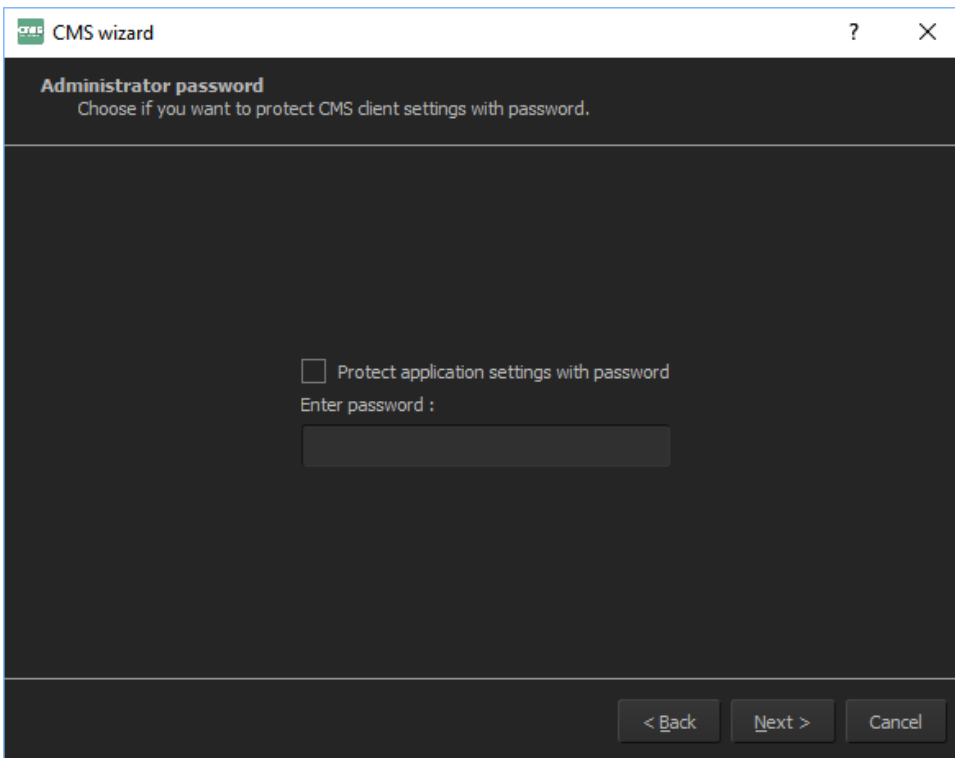


Figure 2. Enter an Administrator password

User interface style

It is possible to select the GUI (Graphical User Interface) color between:

- ✓ Dark – Alnet Systems color theme
- ✓ Light – Windows default color theme

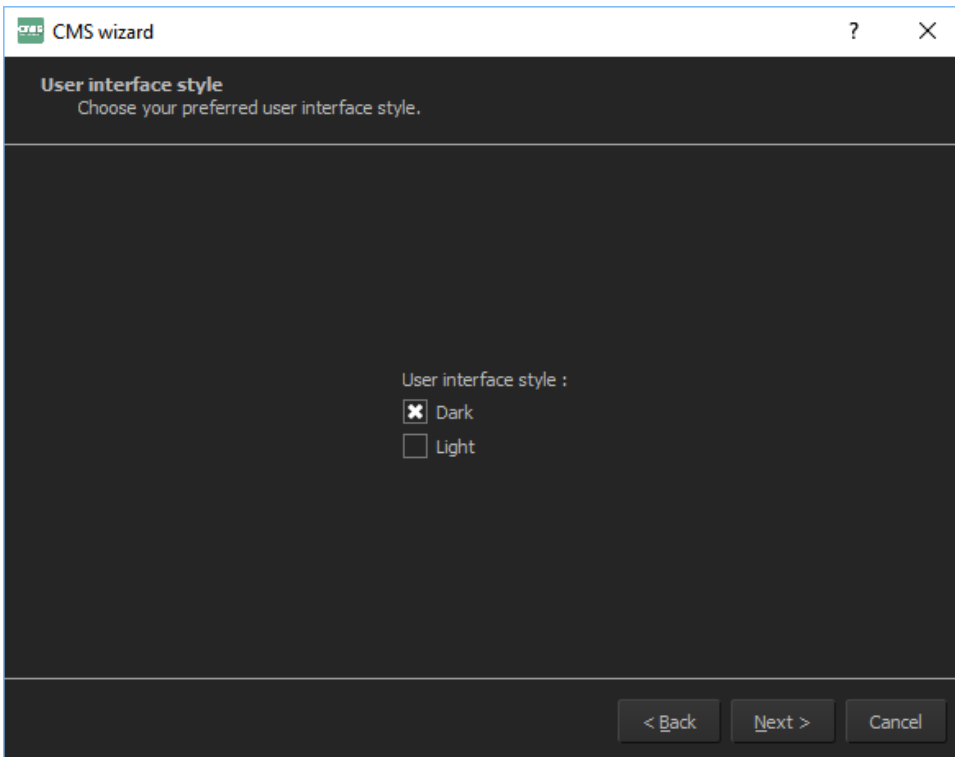


Figure 3. User interface style

Monitors

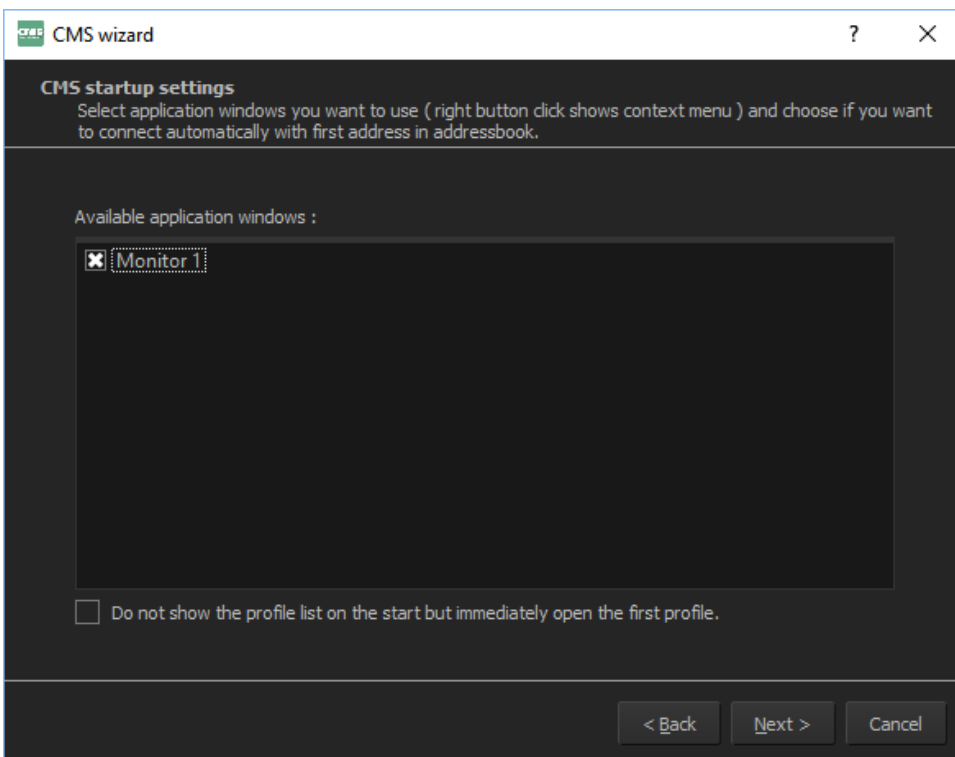


Figure 4. CMS application windows

CMS 4 Wizard automatically detects available monitors. You may select on which monitor(s) the application will run by selecting the corresponding checkboxes next to detected monitors.

Below the window with monitors, there is an option that will allow you to start CMS 4 without choosing profile name. It's useful when you want to have connection to the server right after double clicking CMS 4 icon or when using just single profile.

In CMS 4 there is no limit to number of monitors system could use. The only limit is your hardware configuration.

When you right click on each monitor, there are two additional settings, first one allows you to change the name of each monitor (to find them easier in multi-monitor configurations) and lock the software in full screen mode. Second option allows to run few CMS 4 windows on the same monitor.

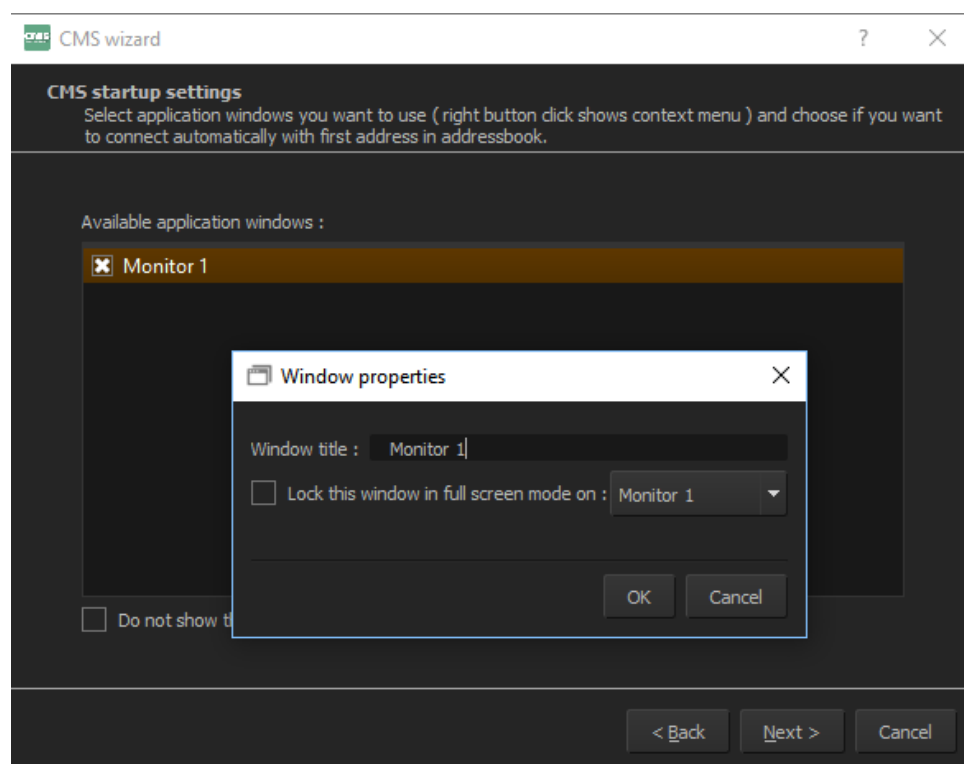


Figure 5. Properties and number of available windows

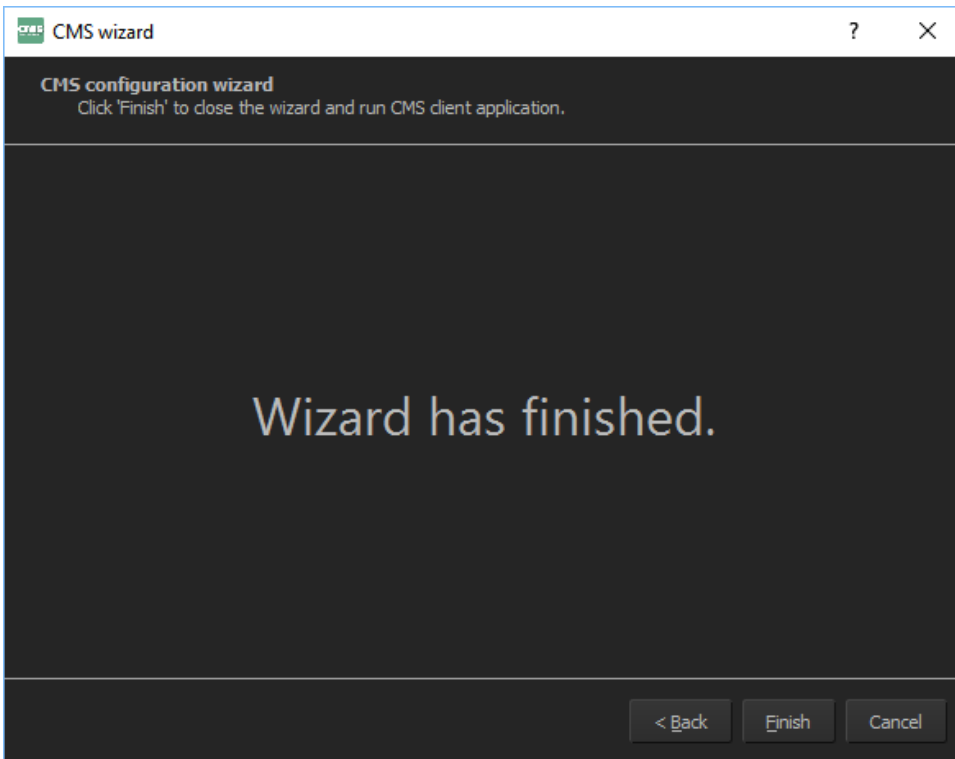


Figure 6. Configuration is finished

At this point, basic software configuration is ready, and after clicking Finish button, the program will start automatically.

4. Configuration

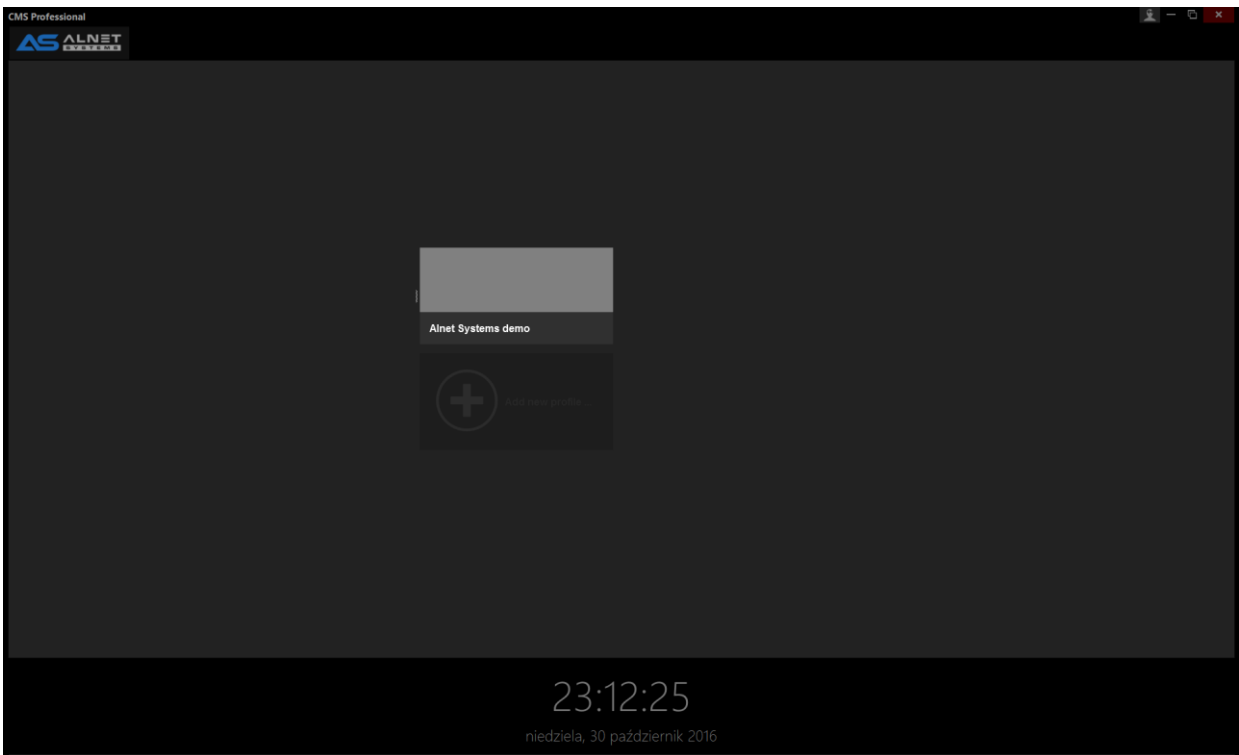


Figure 7. Main software window

After first run you have preconfigured Alnet Systems demo servers which allows you to check your connection and test the system. If you want to add your own video server, then first you need to create new Connection profile (profile which includes your servers, layouts, camera

settings, etc.) by clicking on  icon.

New windows will appear, please enter the profile name, and optionally add background image. After pressing Save changes button, the program automatically saves data and opens it's main window, which in next step will allow you to add your video servers.

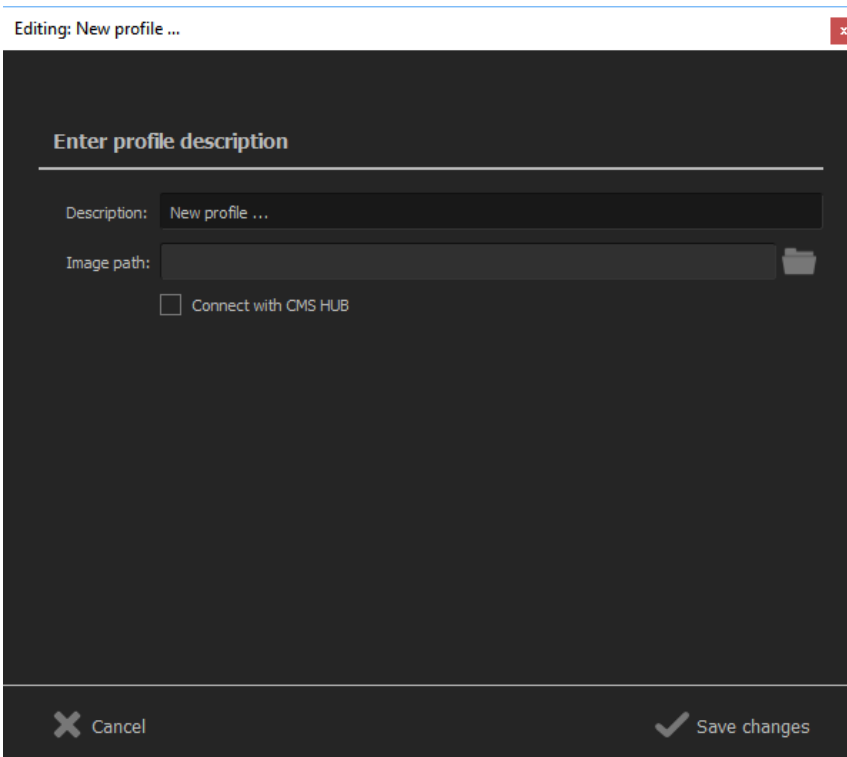


Figure 8. Description and image path

Window with profile settings will appear after each run of the program (if you didn't select the option in Configuration wizard). You may add the new profile or edit existing profiles by right clicking on it and selecting Edit properties option. In order to remove the profile, click the X icon on the right-lower corner of profile's tile.



Figure 9. CMS 4 - main window

After configuring the Connection profile, the main program window will appear. To add a server (DVR) you need to right click on DVR folder on the left panel, and then choose Add DVR option. A new window will appear where you can put a name of your DVR and short description (optional).

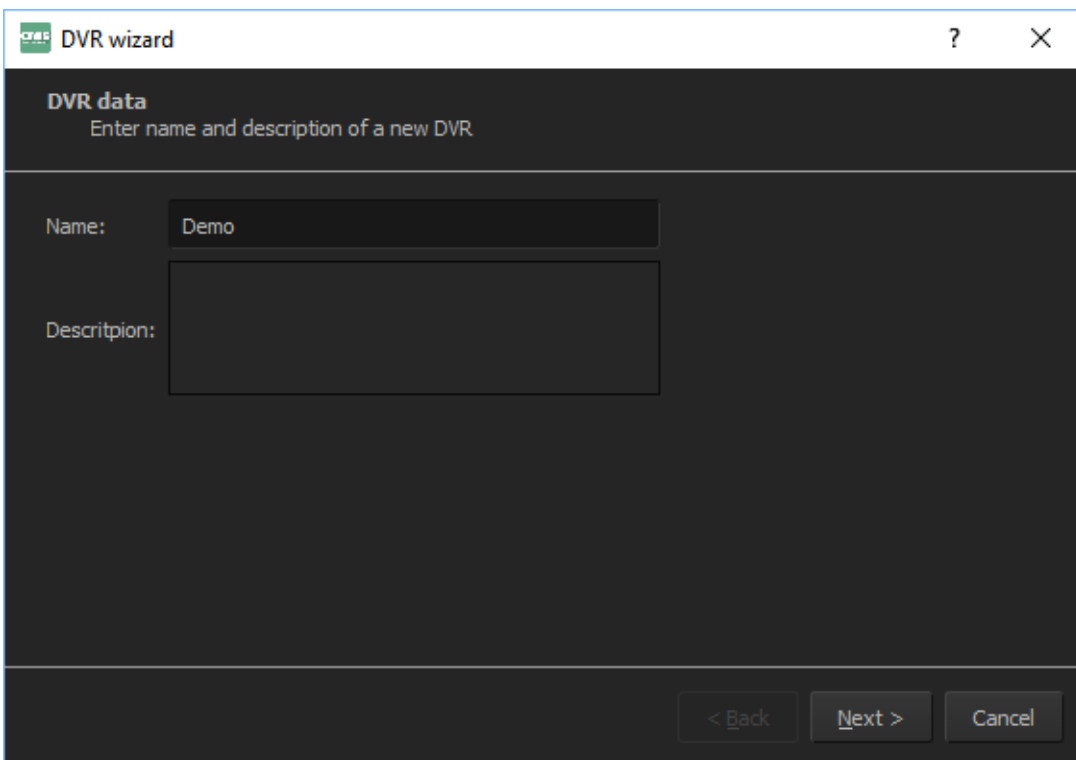
The image shows a software window titled "DVR wizard" with a standard Windows-style title bar (minimize, maximize, close buttons). The window has a dark theme. The main content area is titled "DVR data" with a subtitle "Enter name and description of a new DVR". Below this, there are two input fields: "Name:" with a text box containing "Demo", and "Description:" with a larger, empty text box. At the bottom right of the window, there are three buttons: "< Back", "Next >", and "Cancel".

Figure 10. Add DVR wizard

After that press Next> button, and you will be able to put connection details, which are as below:

- Address – IP address or domain of remote server
- Port – TCP Port of remote server (default 9000)
- Backup port – TCP port for making archive backup (default 4000)
- Login – user name
- Password – user password

The screenshot shows a window titled "DVR wizard" with a dark theme. The main heading is "DVR network address" with a subtitle "Enter network address of a new DVR". Below this, there are five input fields: "Address:" with the text "alnetgd2.vdr-s.com", "Port:" with the value "9000" and up/down arrows, "Backup port:" with the value "4000" and up/down arrows, "Login:" with the text "demo", and "Password:" with four dots. At the bottom right, there are three buttons: "< Back", "Finish", and "Cancel".

Figure 11. Add DVR - connection details

After clicking Finish button, the connection to the remote server is established, and server name with corresponding layout (depending on number of cameras) is displayed on Layouts panel.

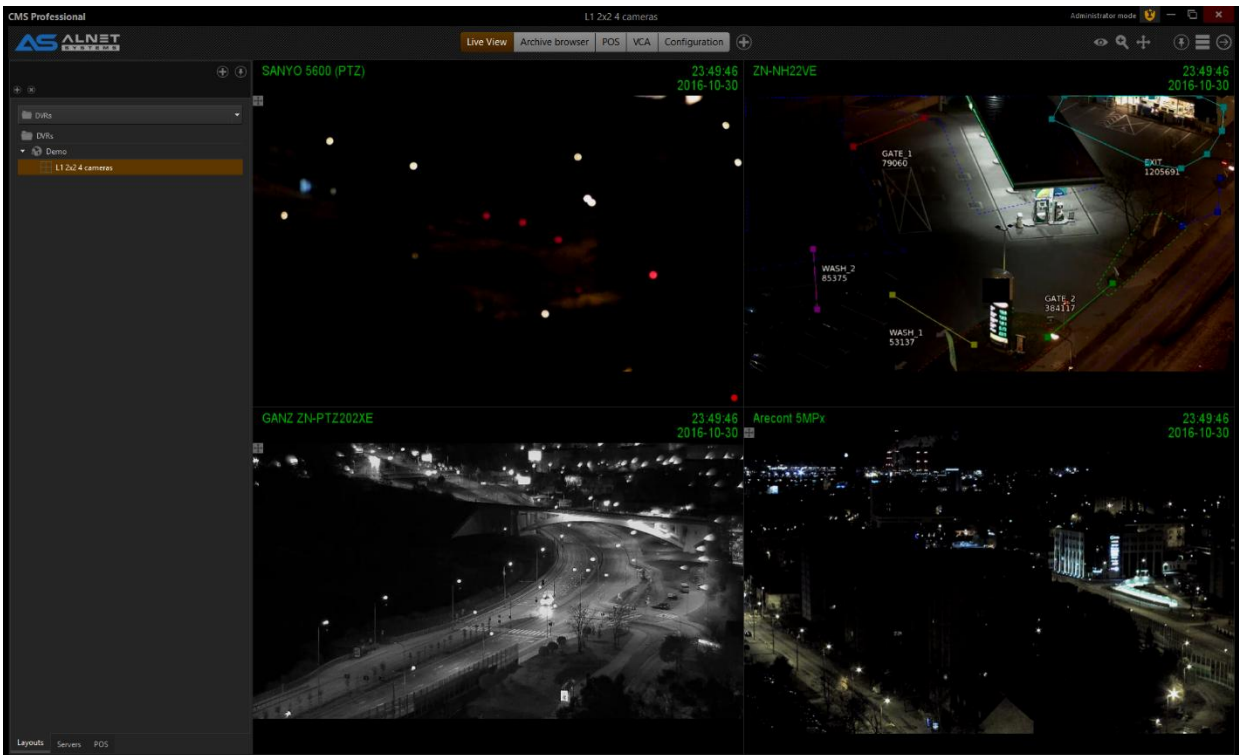


Figure 12. First view after connecting

5. Main window

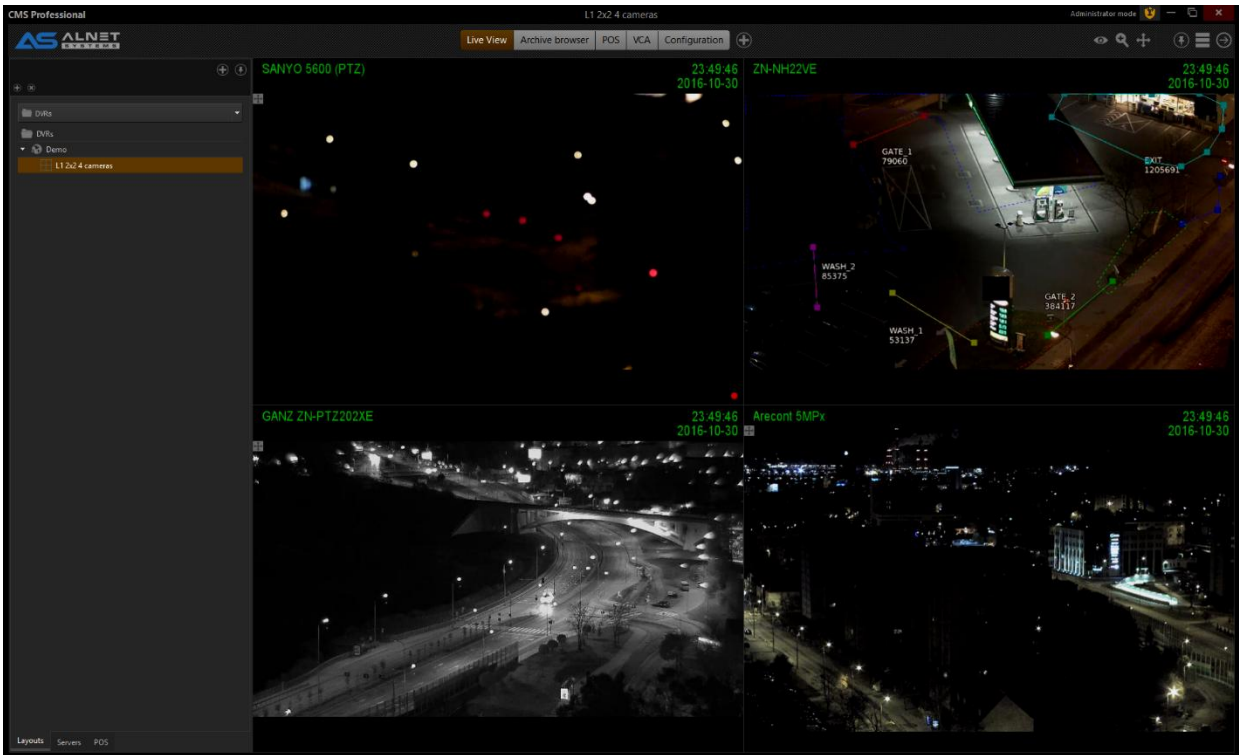


Figure 13. Choose the layout

On left panel choose the layout from the server/servers you added.

Docking this panel after pressing this  button . To undock drag mouse to left and click .

On main header you got at least 3 buttons:

Live view – as stated shows live view from connected servers

Archive – allows to check archive recordings from connected servers

Configuration – place where you can change settings of the client and also in certain cases settings of CMS Hub and server software

Beside that, when enter Administrator mode, you might add additional buttons like:

DVR status –

POS –

LPR –

LPR archive –

VCA –

Access control –

Access control archive –

Web browser –

Logs –

Snapshots –

Backup –


Reports –

We will describe more thoroughly all of those windows in next chapters of this manual.

On the right you will also find 3 buttons which allow to enter view mode, zoom mode and PTZ mode.

In the right upper corner you will also find menu button, where you can for example enable administrator mode. We will cover this menu in next chapters.

6. View mode

To enter VIEW mode go to upper left corner of active camera and press this . This is standard mode to view cameras. In this mode you can for example double click to make chosen camera on full screen or make a snapshot with right mouse click on the picture (when you are in user mode).

When you enter to Administrator mode, you will get access to additional functions such as stream quality, switching between live and archive view or choosing archive source (remote or local). Also in administrator mode you can drag and drop cameras on the layout and also from Servers menu on the left to arrange layouts.

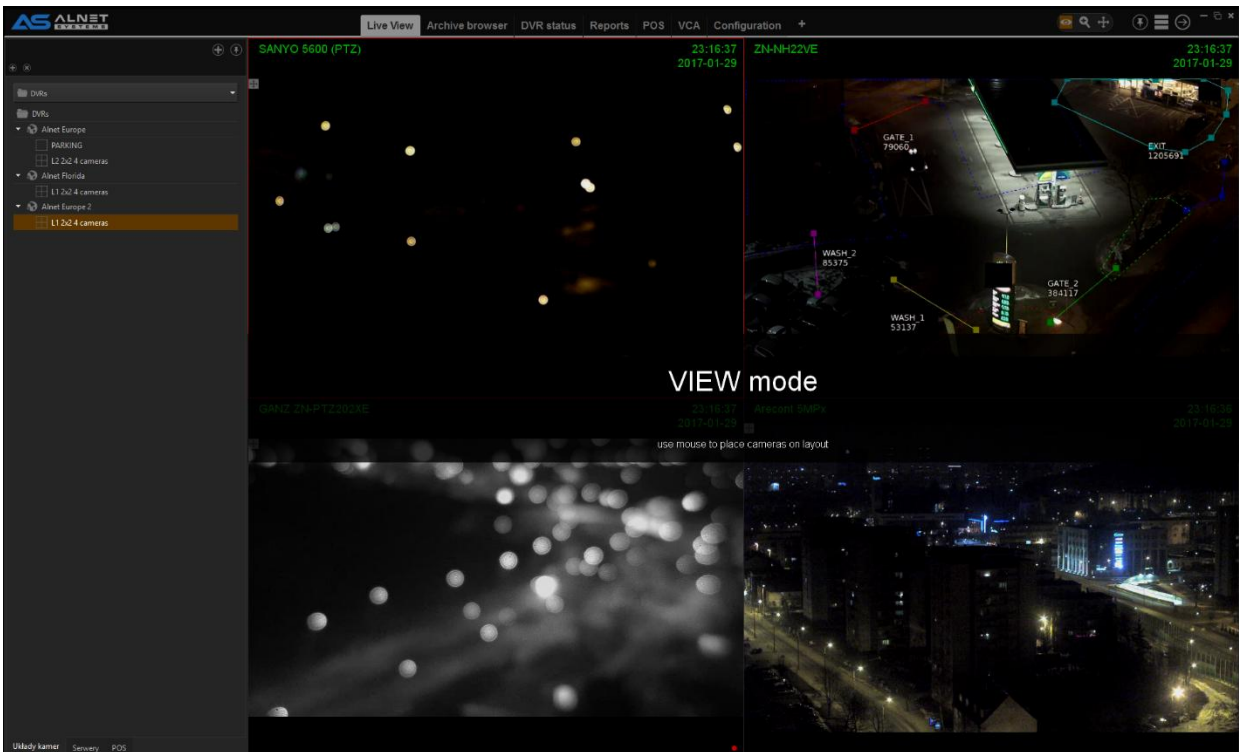



Figure 14 Entering VIEW mode

7. ZOOM mode

To enter Zoom mode go to upper left corner of active camera and press this . This is advanced mode to enlarge image using digital zoom. Simply press left mouse button and enlarge the desired fragment of image.

If you set the same camera two times on the layout, then the one that is not enlarged will display rectangle which allows you to easily move on the enlarged area. It is also shown in our tutorial videos which are published on our Youtube channel.

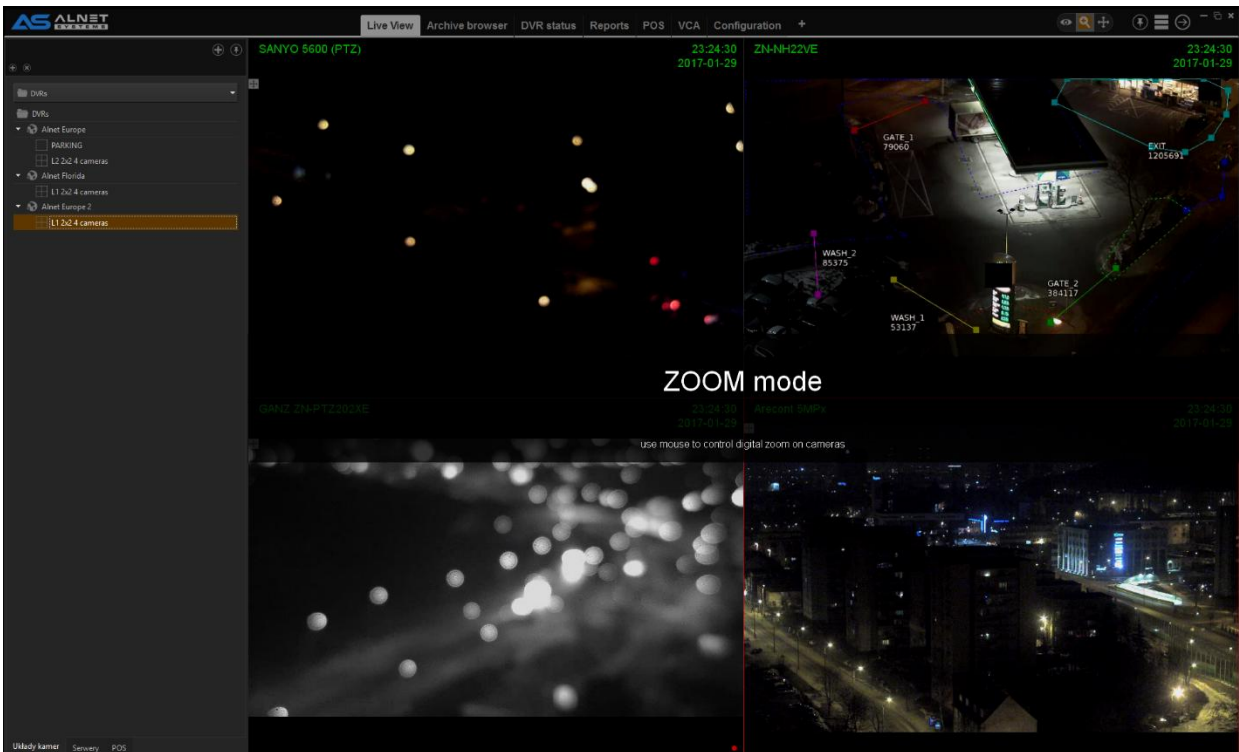


Figure 15 Zoom mode

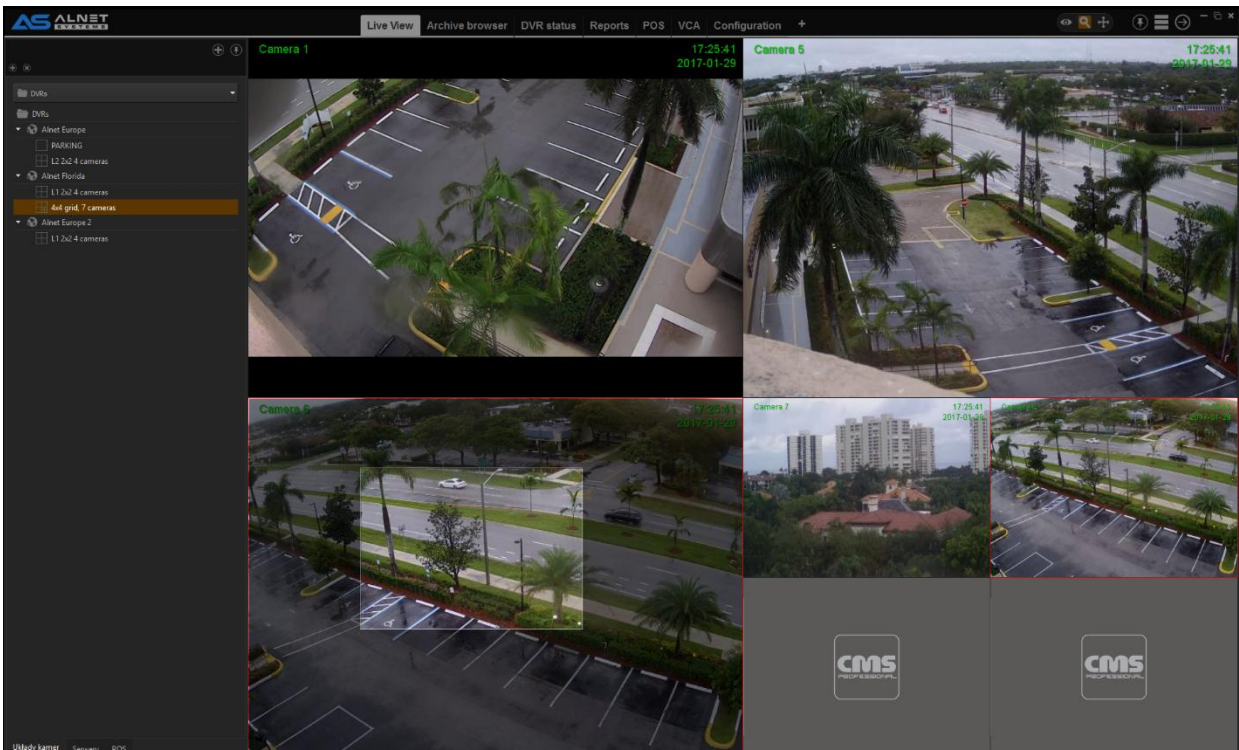


Figure 16 Drawing enlarged area

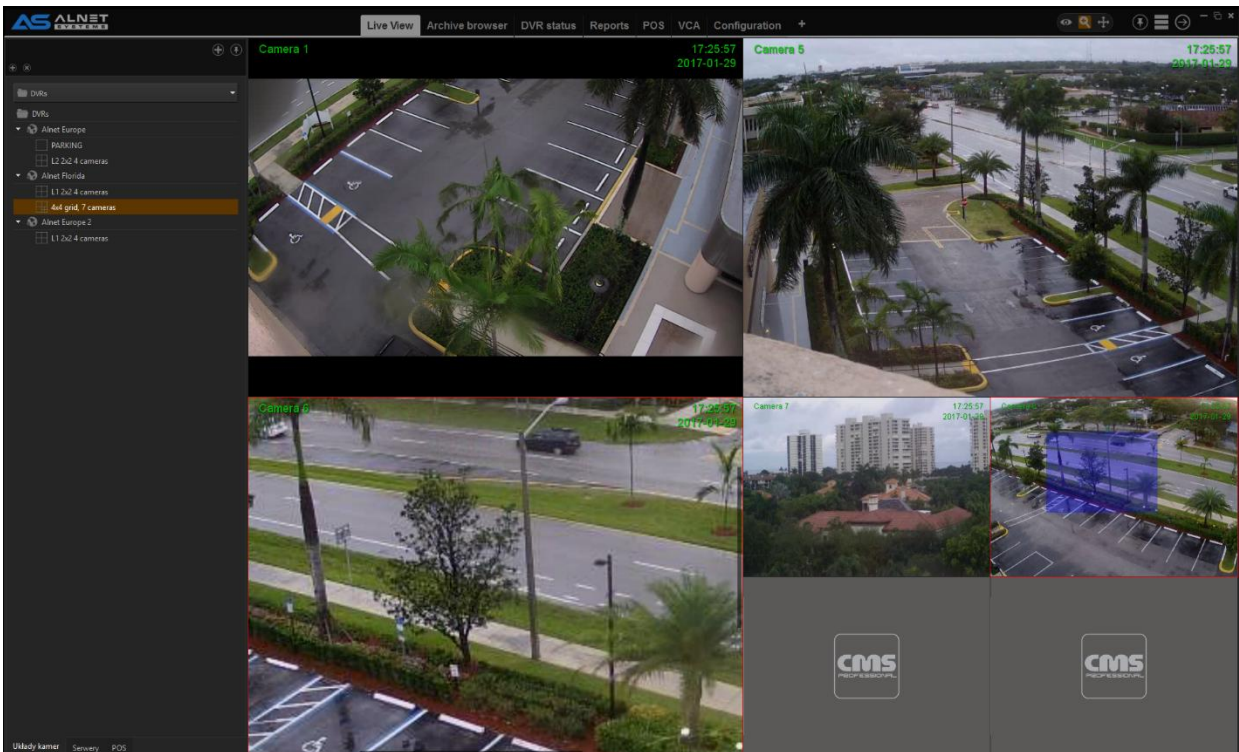



Figure 17 Enlarged part of the image is selected on the same camera in other place on the layout (blue rectangle)

8. PTZ mode

To enter PTZ mode go to upper left corner of active image and press . Clicking the mouse on picture from the dome camera will move the dome to desired direction/area. For optical zoom you can use mouse scroll.

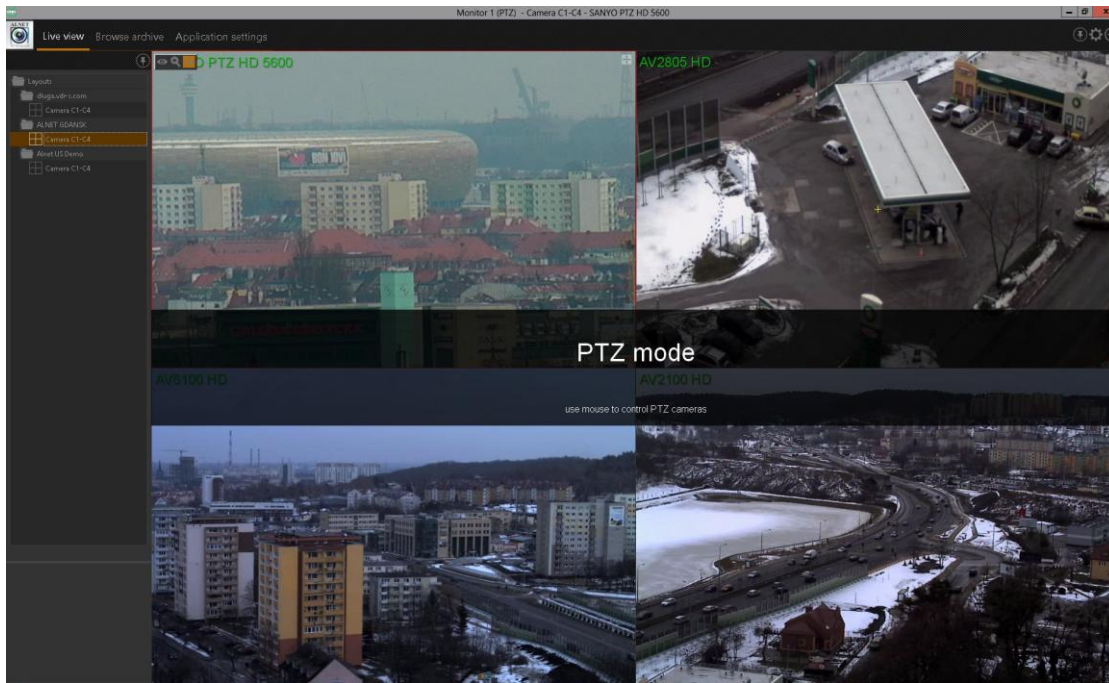


Figure 18 Entering the PTZ mode

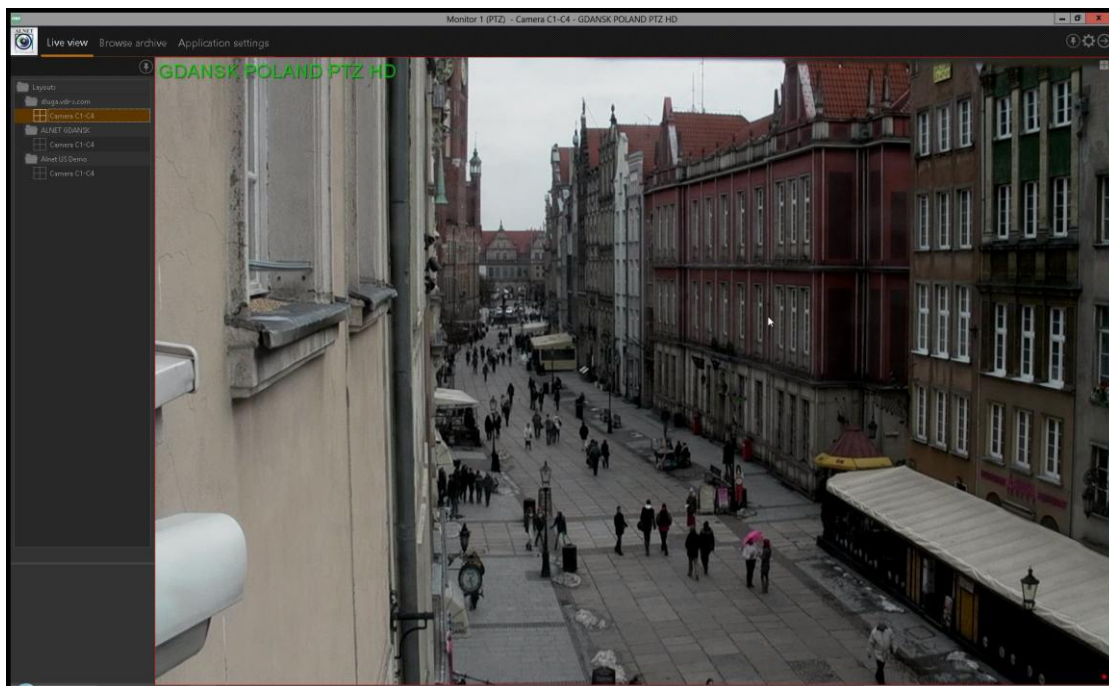


Figure 19 Enlarged image in PTZ mode

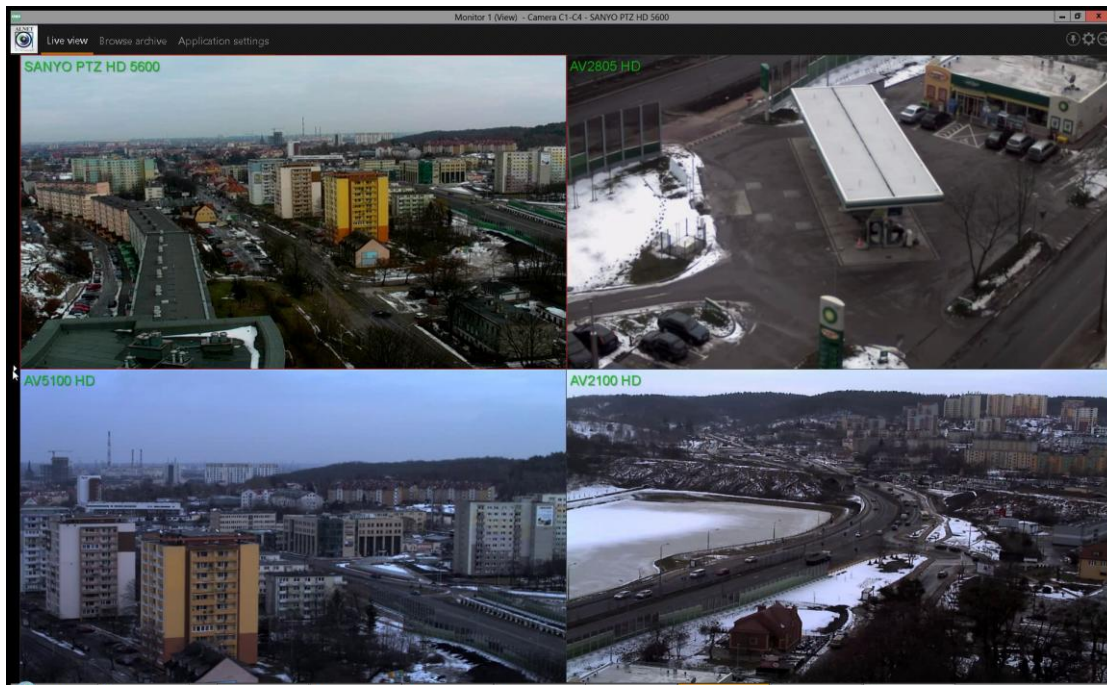


Figure 20 Picture without left panels