



AVC card and Extension
user's manual

User's manual version 1.0 (January 2012)

This manual applies to program version 3.0.0.507

INDEX

1.	INTRODUCTION	3
1.1	System description	3
1.2	Video capture cards	4
1.3	System and hardware requirements	5
2.	INSTALATION OF THE SYSTEM	5
2.1	Video capture cards installation	5
2.2	Installing the USB dongle	6
2.3	Connecting cameras	6
2.4	Software installation	7
3.	USE AND CONFIGURATION OF THE SYSTEM	8
3.1.	Running the program for the first time	8
3.1.1.	Configuration Wizard	8
3.1.1.1.	Choosing the language	9
3.1.1.2.	Regional settings	9
3.1.1.3.	Video capture cards	10

1 Introduction

We present to you next version of NET PROFESSIONAL system with many new functions and modules. Many of these changes is the effect of our cooperation with You and our Partners. Part of them are our ideas which extend capabilities of digital video recording. Please pay your attention to the possibilities of simultaneous image recording from network cameras and, widely used so far, analog cameras, developed archives and wider capabilities of controlling the whole system.

1.1 System description

NET PROFESSIONAL is a digital video recorder designed for cooperation with CCTV cameras. It uses PC class computers which work under control of Microsoft Windows VISTA / 7 (32 Bit) operating system. New NET PRO system version can record image from up to 32 cameras, servicing 32 output switches and 32 alarm inputs. Moreover the system can be hybrid, that is one system can service both analog and IP cameras – thanks to this it is possible to upgrade an existing installation and add IP or analog cameras. Managing the video server through the network is possible. Program allows wide possibilities of motion detection settings, searching the motion in archives, servicing alarm events. Differential

image-compression method guarantees image recording longer than in other systems of that type without changing the image quality and storage space.

Software for managing VDRS AV system consists of two independent applications:

1. NET PROFESSIONAL (*Video Digital Recording - Server*)
2. CMS (*Video Digital Recording - Client*)

The first application is a server: processes image from the cameras, manages user accounts, tasks, controls the cameras. The second one is used as a client. We can connect to the server by a local network and do remote monitoring. Client application is available on mobile devices (mobile phones, Pocket PC) which allows access to camera images from any place in the world.

1.2 Video capture cards

Video capture cards are mainboard extension placed inside the computer chassis. They use commonly accessible PCI, PCI-E interface on mainboards. Current technology allows image processing from 25 up to 400 frames per second for one card in PAL system. Whole specification of available devices can be found on our website www.alnetsystems.com.

1.3 System and hardware requirements

- **Intel** processor (*Pentium Core 2 Duo, Core 2 Quad*)
- Mainboard based on **Intel** chipset (*ASUS P5Q WS*)
- Min.1 GB of RAM
- Power Supply (Corsair CMPSU-550VX)
- Graphics Card – ATI (HD4350 1G HM 512M)
- Free hard disk space for storing video archives (*min. 40GB*)
- Microsoft Windows Vista 32 Bit (Home Premium) / Windows 7 32 Bit (Home Premium)

2. Instalation of the system

The way of installing video capture cards and VDRS AV system software on PC class computer is presented below.

2.1 Video capture cards installation

Begin installation by mounting the cards on the mainboard.
Cards are placed in PCI-E slots:

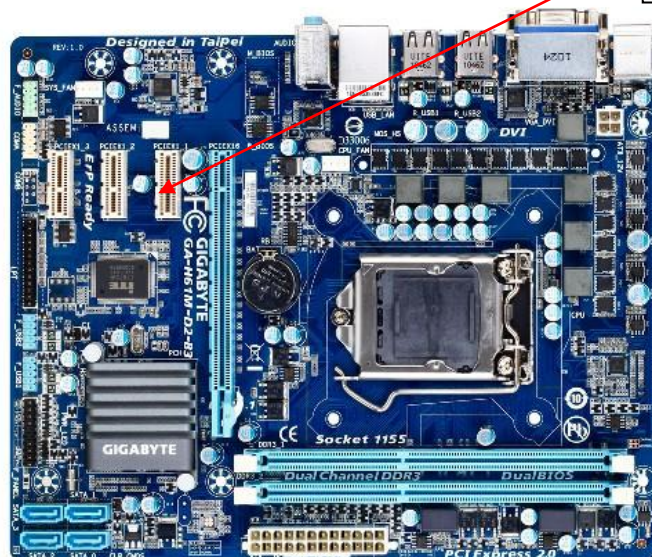


Fig. 1 Installing the AVC card

2.2 Installing the USB dongle

The system needs USB dongle installed for proper work. Plug it to USB port in Your computer. Remember to have it plugged permanently, if else the system will shut down. During the work of the system the dongle glows blue, which indicates it's proper functioning.

2.3 Connecting cameras

To connect cameras plug camera cables with BNC connectors to video capture cards.



Fig. 2 Connecting the cameras

2.4 Software installation

When all the devices are connected correctly You can begin to install software. Turn on the computer and when Your OS detects new devices do not install it until NET PRO software is installed. Leave the system window without clicking. Next run application NET_PROFESSIONAL_INSTALL.exe from the delivered cd with software.

After the software is installed You will be asked to restart the computer. At this stage select *"No, I will restart later"*. Begin video capture cards' drivers installation. If the Operating System still shows the system window regarding new devices, follow the steps of the installation panel. If else, You have to install devices manually. Click right mouse button on *My computer* icon, select *Properties, Hardware* bookmark, *Device manager* button. Next choose *Scan for hardware changes*. System will initiate a creator for installing new devices. Follow the steps. To check if video capture card is installed properly go to *Device manager* and "unroll" *Sound, video and game controllers* menu. After successful installation of all of the devices *restart Your computer*.



ATTENTION: during installation of VDRS application, drivers for capture boards are installed at the same time, which can cause "Windows warning" displayed regarding lack of Microsoft digital signature in the installed drivers. In this case press "Continue anyway" in order to install the drivers properly.

3. Use and configuration of the system

During the installation process NET PRO application is added to *Autostart* group, which means it will be automatically activated when Your Operating System starts. It is also possible to run video server manually from the *Start Menu* or from the shortcut on desktop. Important action after every change in the system is saving the configuration. You can do it by choosing from the menu:

Configuration ➡ Save configuration

3.1. Running the program for the first time

When running the program for the first time it is necessary to define some parameters, which are essential for proper work. Explanation of this matter is presented below.

3.1.1. Configuration Wizard

When running the program for the first time it is necessary to define some parameters, which are essential for proper work.

3.1.1.1. Choosing the language

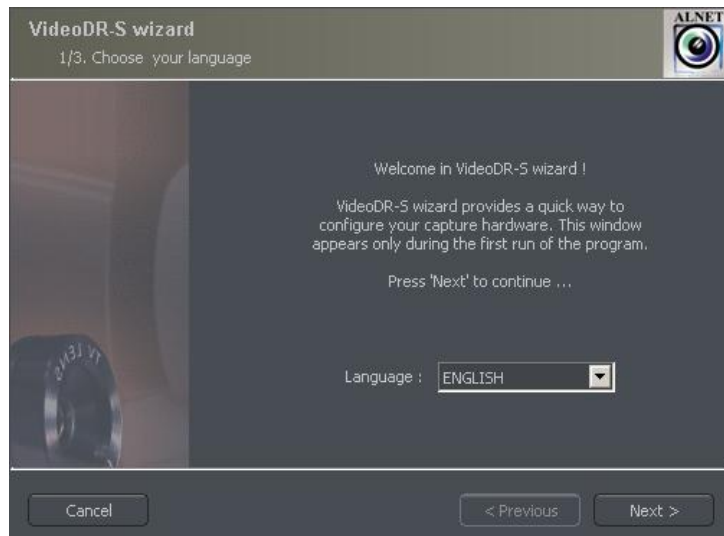


Fig. 3 Configuration Wizard - choosing the language

Pick the language from the list. After this click next button.

3.1.1.2. Regional settings

In the next window set the time format: 24 hour (24 hour) or AM/PM (12 hour). Below there are three data display formats.

Symbols explanation:

dd – day, mm – month, yyyy – year

Go to the next step by clicking next.

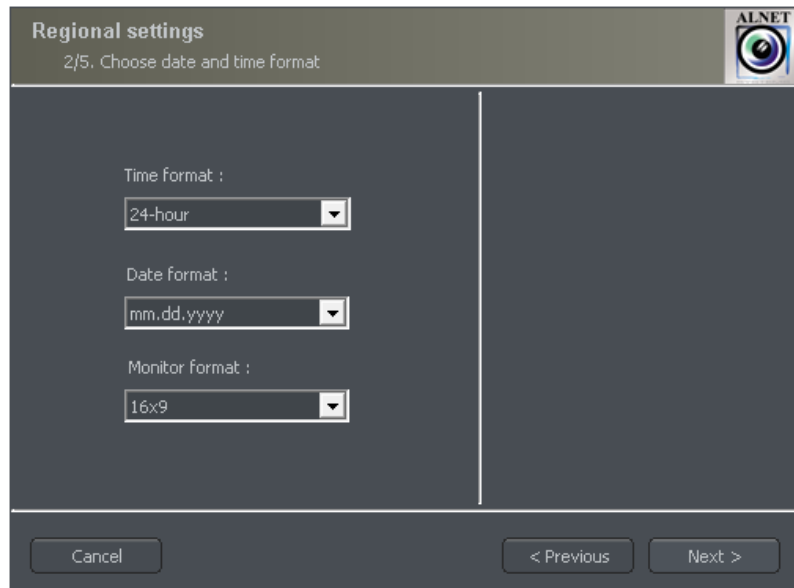


Fig. 4 Configuration Wizard - regional settings

3.1.1.3. Video capture cards

In this part point if the which extensions are installed in the system. You don't have to choose the proper type from the list it will be added automatically.

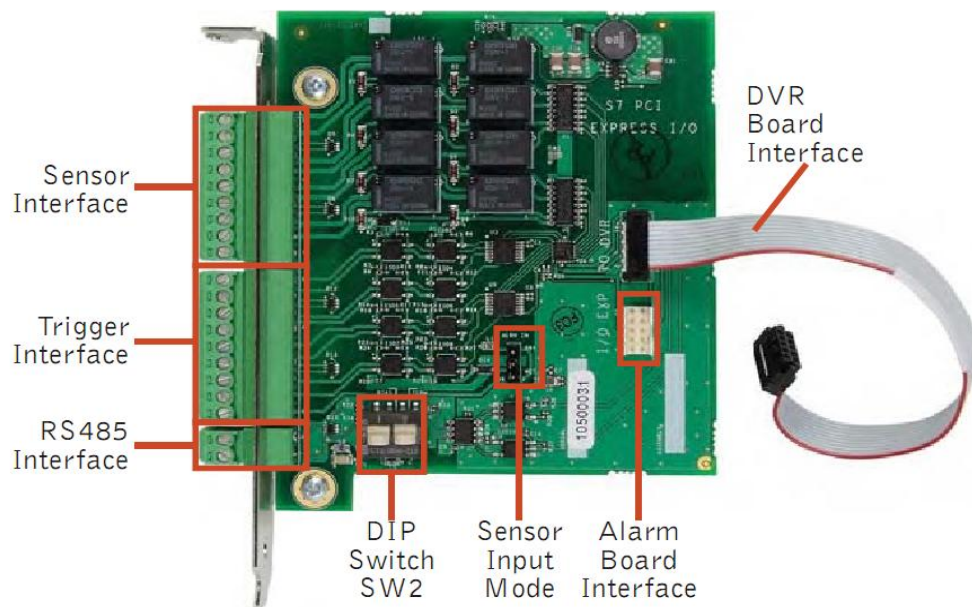


Fig. 5 AVC - Extension cards

If you want to connect 1 or 2 AVC Extensions you have use connect it just like on the picture below.

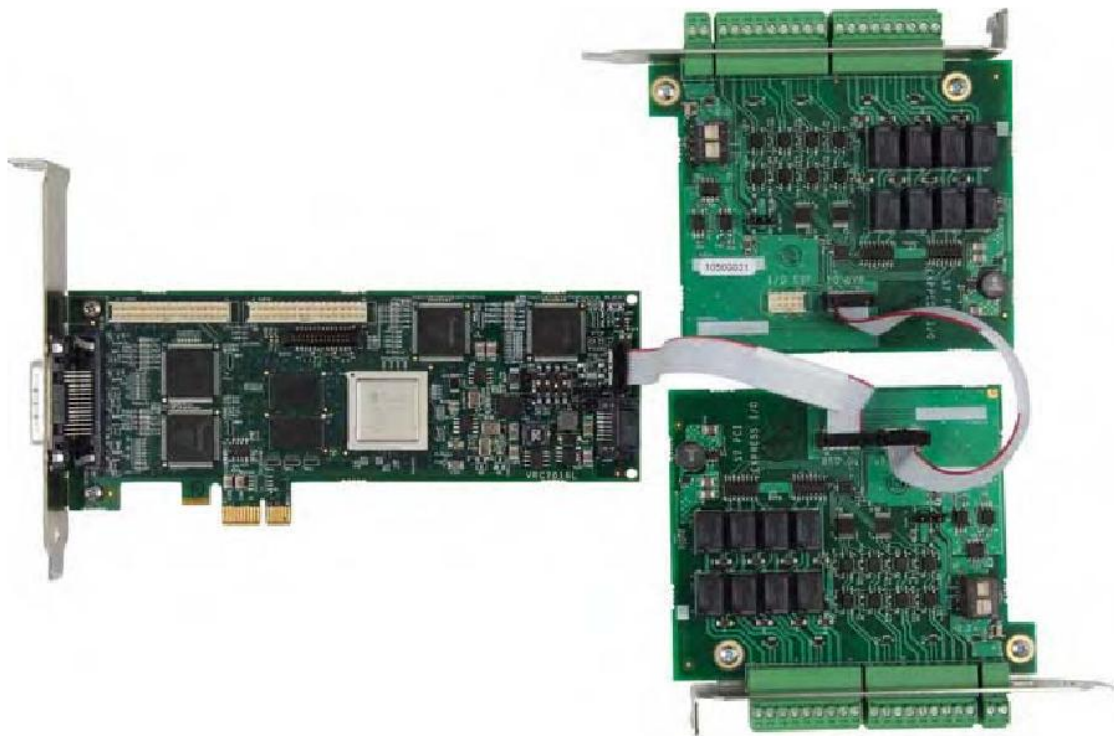


Fig. 6 Configuration Wizard - Extension cards (connecting one AVCEXT card)

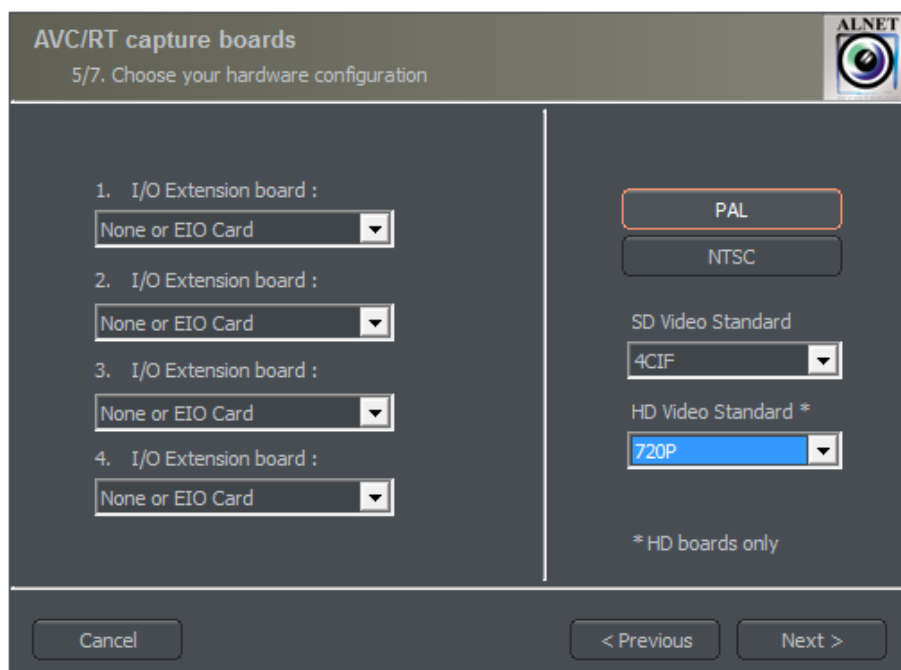


Fig. 7 Configuration Wizard - video capture cards

Next step is to choose between PAL and NTSC video recording standard. Countries and areas which use above-mentioned standards can be found in the *"Image transmission standards"* supplement.

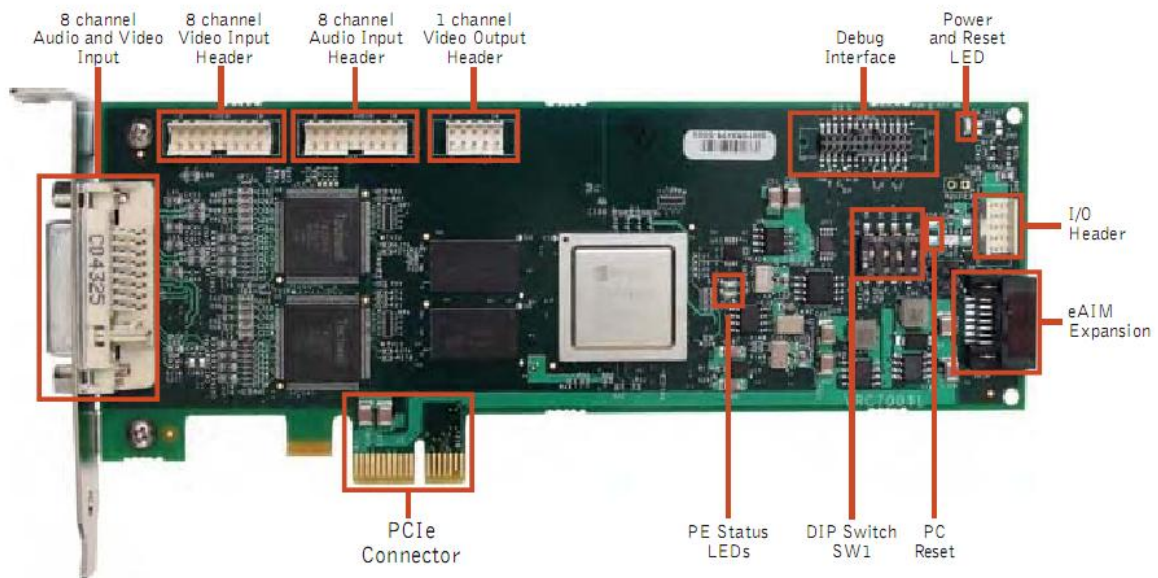


Fig. 8 VRC7008L

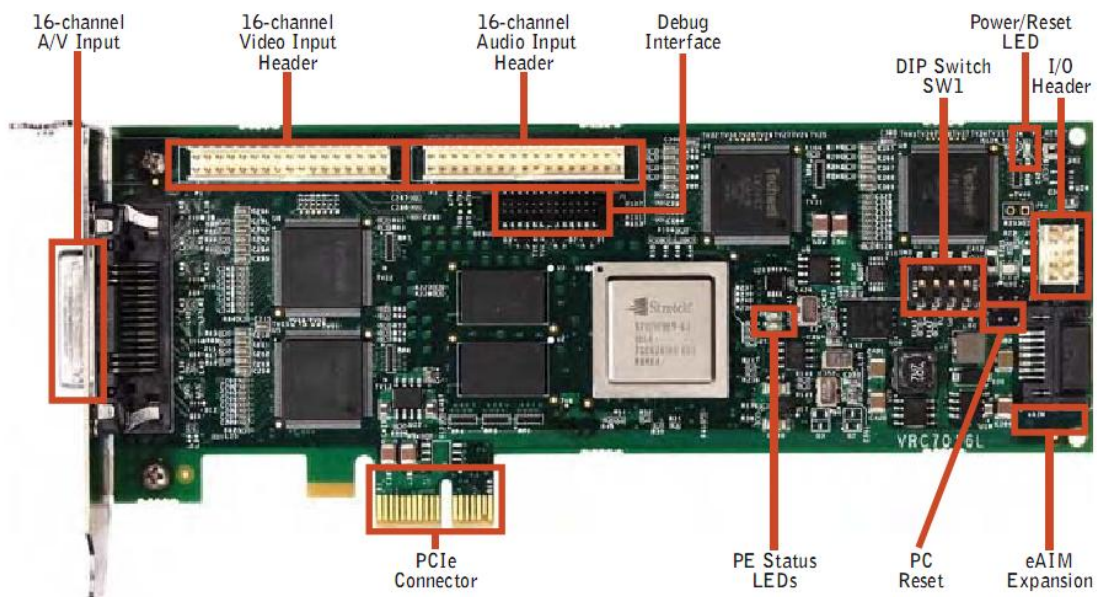


Fig. 9 VRC7016