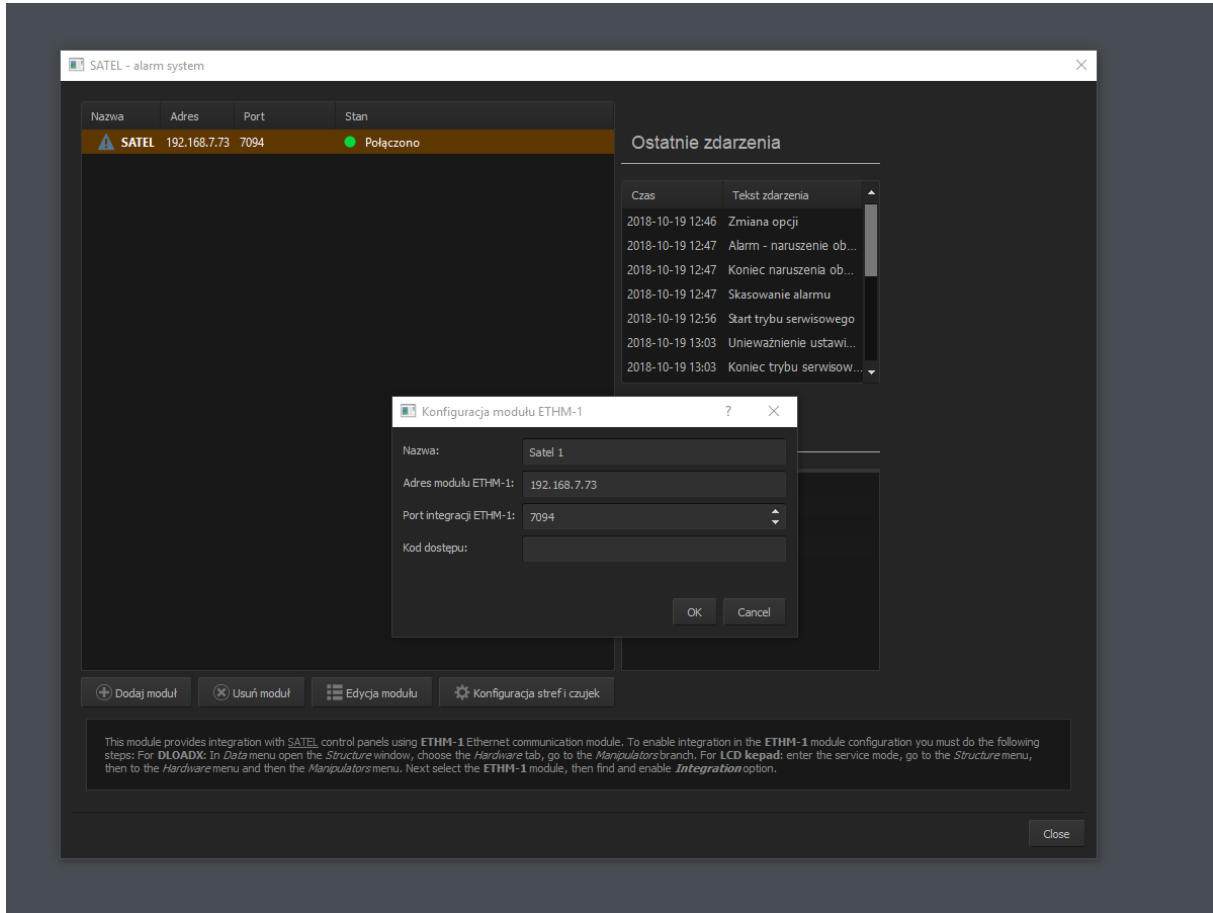




Satel Integration

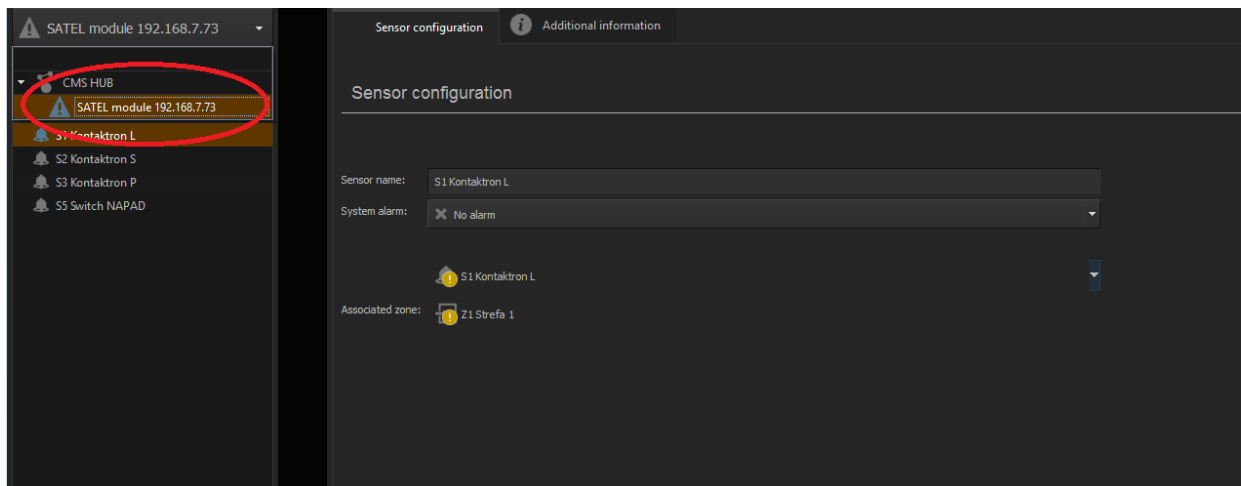
Quick Start Guide

3.12.8.4 Satel Alarm system



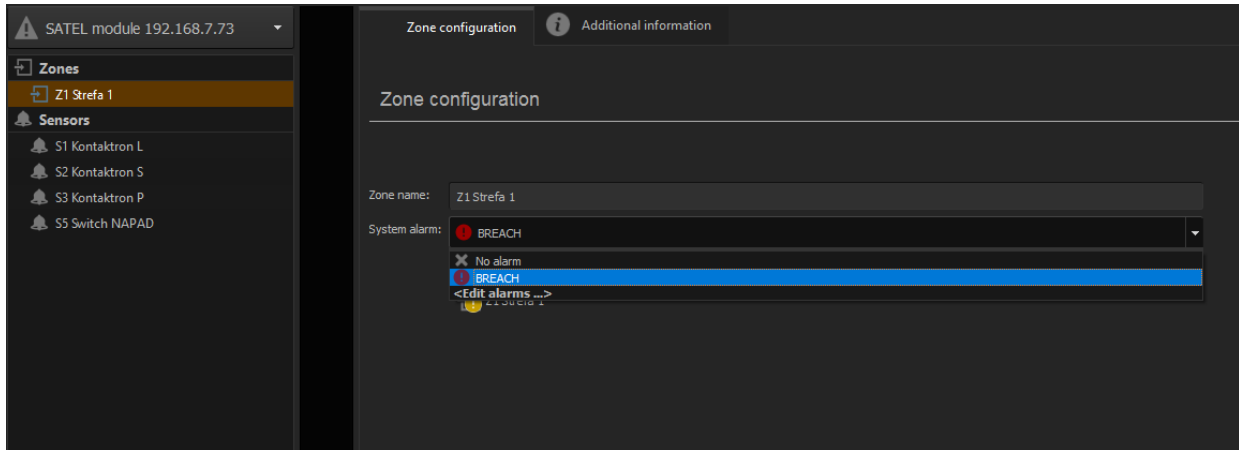
Entering Satel module data.

To connect Satel Alarm you need to add in settings, press Add Module and fill all needed info about the module.



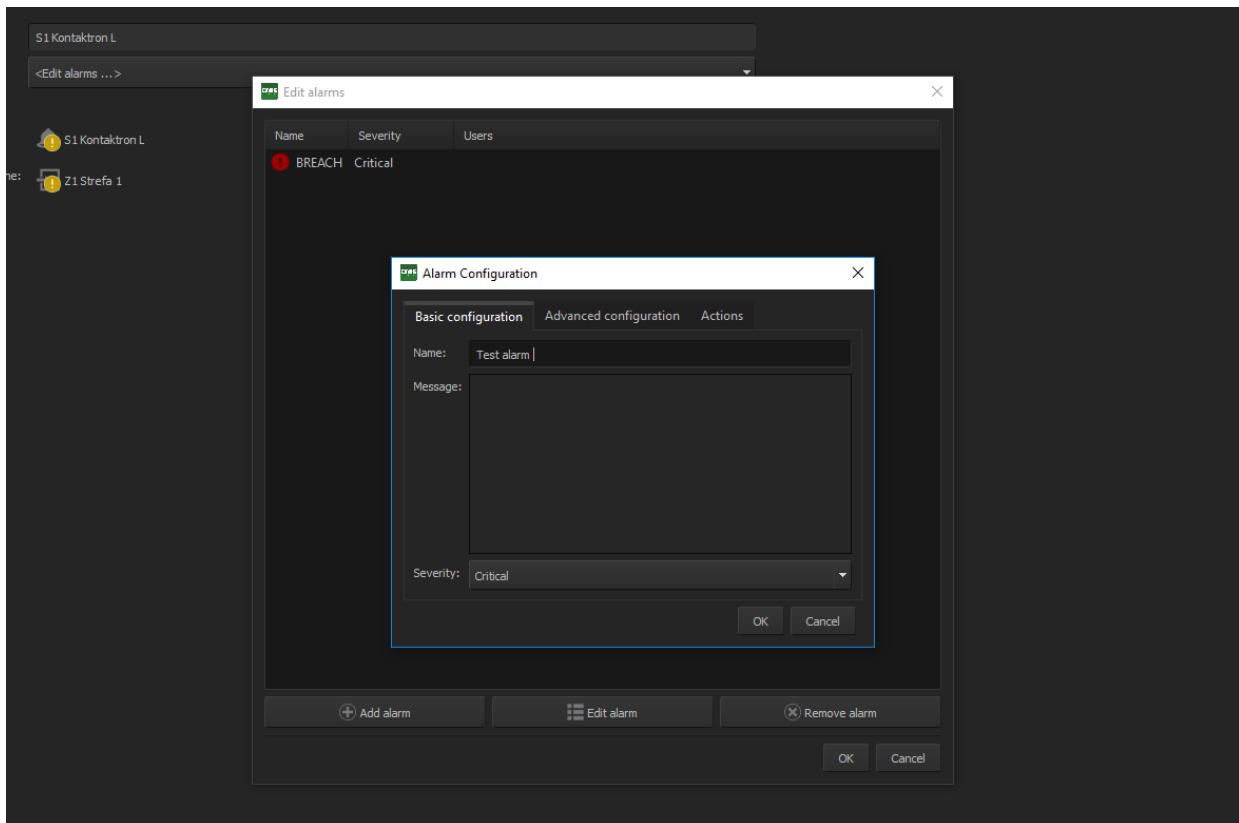
Accessing advanced settings

To access advanced settings of the module, expand the list of devices in top left corner

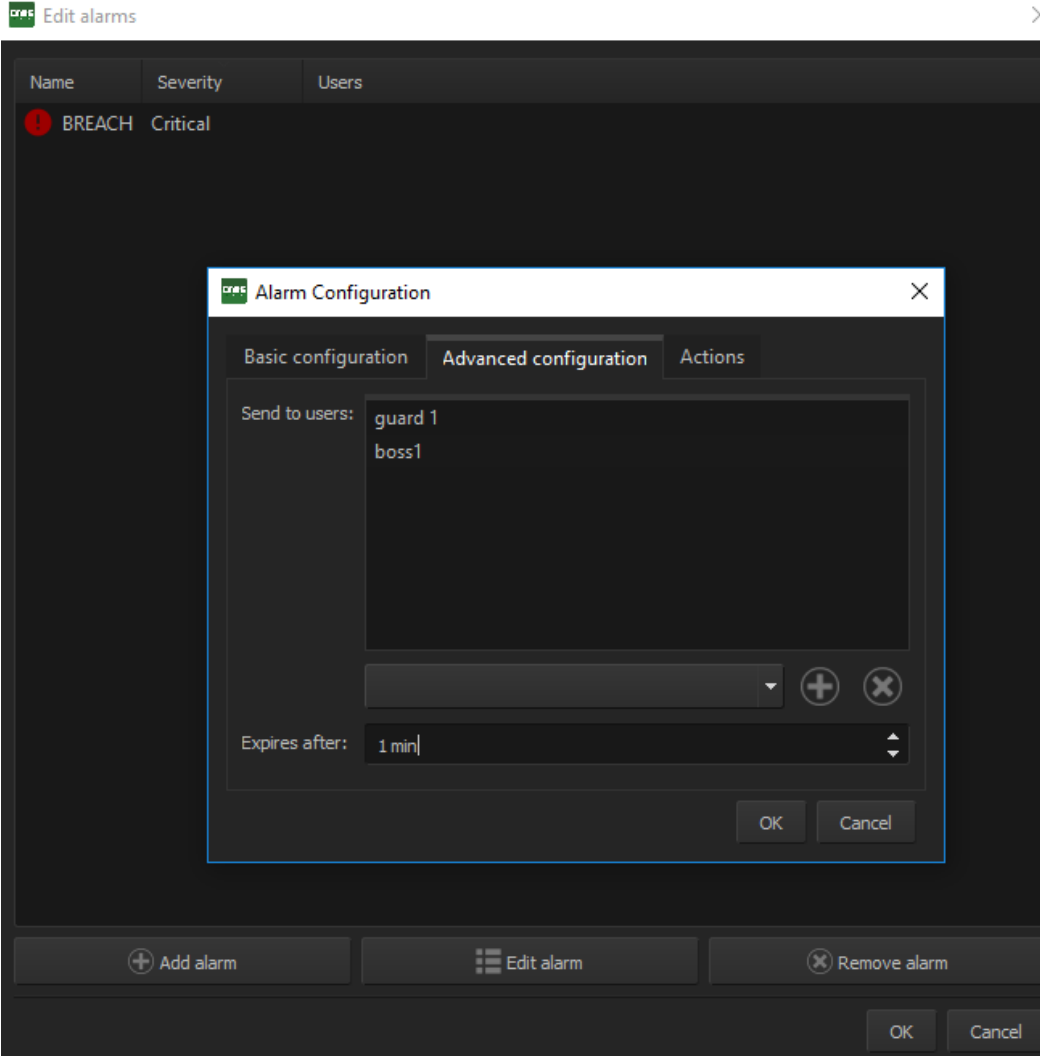


Choosing System Alarm

In basic zone configuration you can choose which alarm protocol is assigned to certain zone, you can configure separate alarm for each zone.

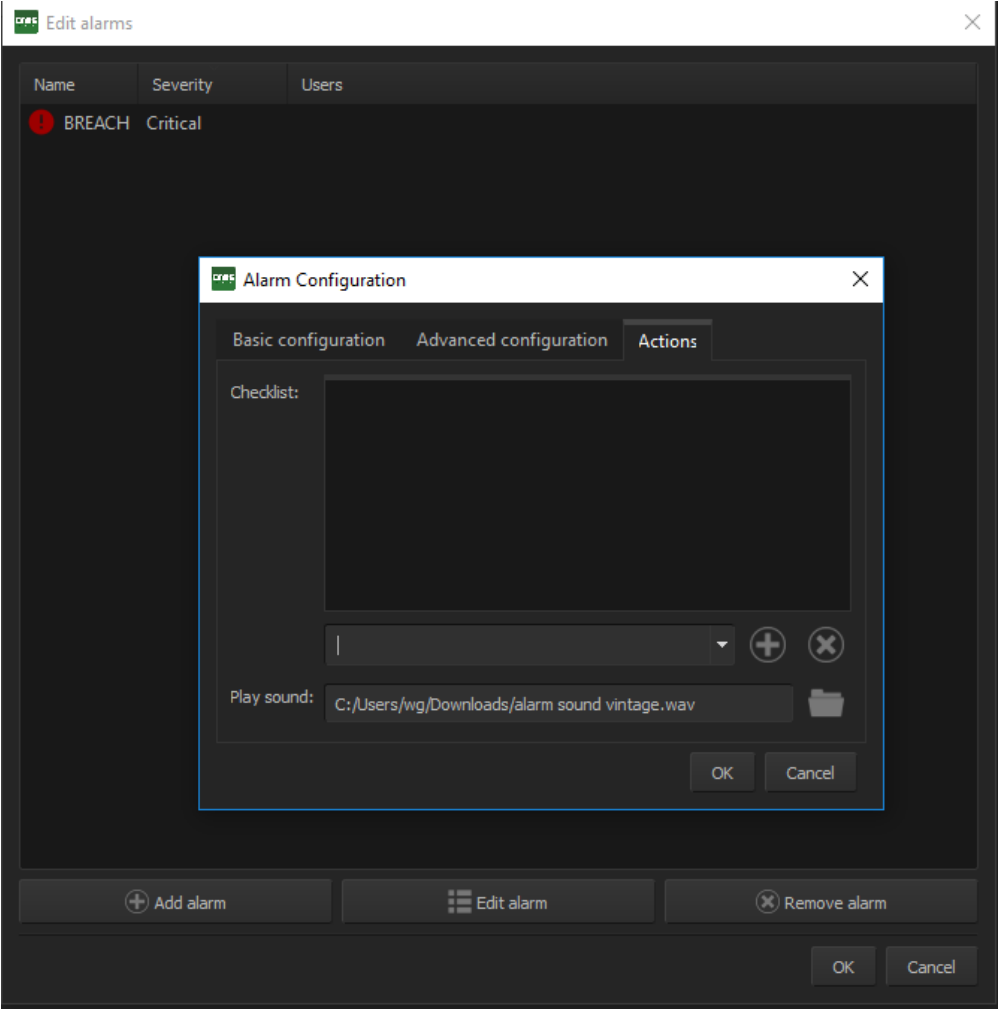


Basic alarm configuration



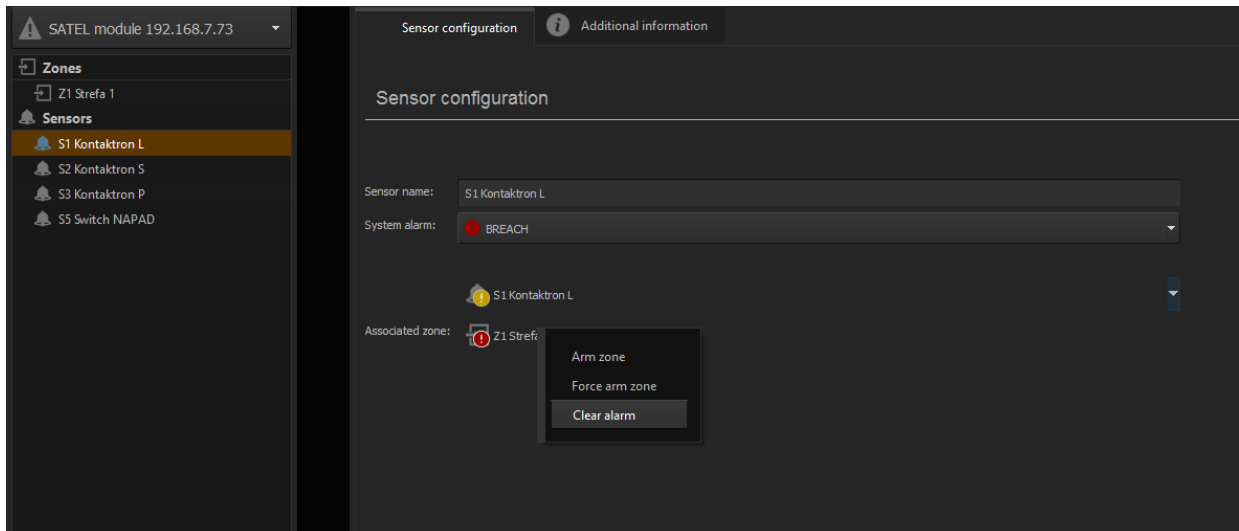
Advanced alarm configuration

Here you can send HUB users which will be informed about the alarm and expire time



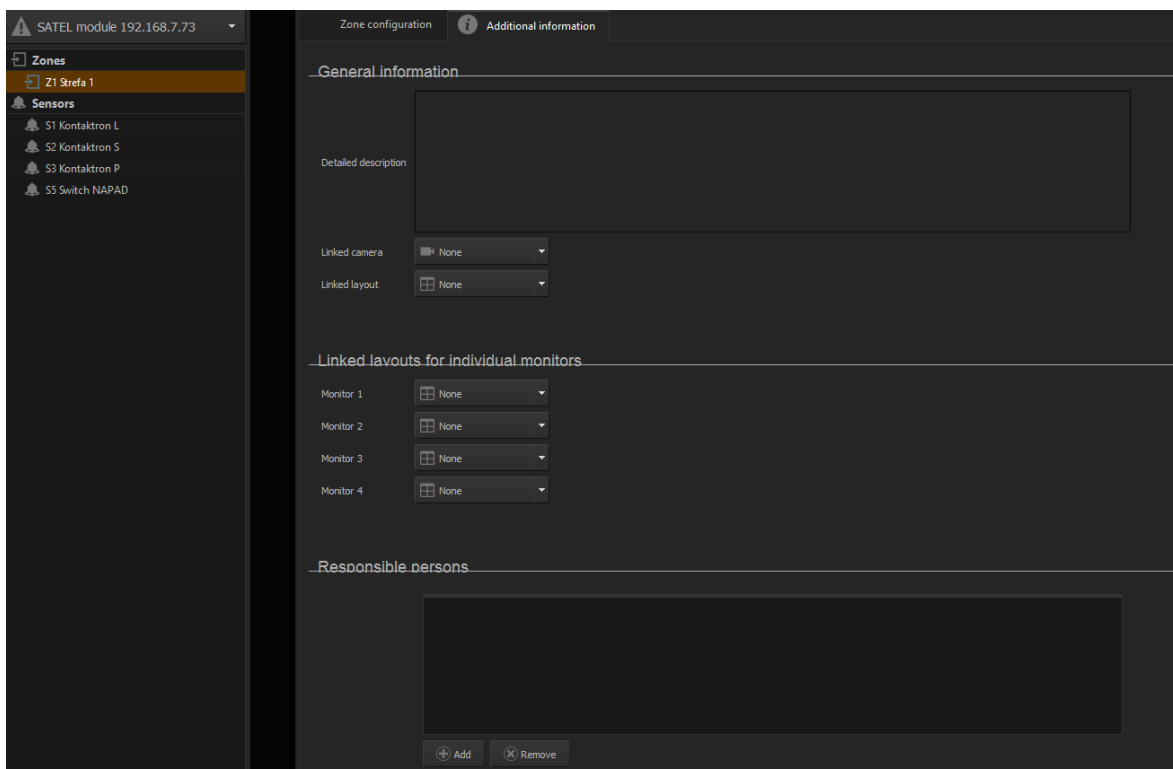
Alarm action configuration

Here you can set up check list to be fulfilled by guards after alarm and add sound that shall be played when during alarm.



Arming/Disarming zone

Here you can clear alarm or arm/disarm zone. Force arm zone alarm allows to arm the zone even though the reed switch is opened (see Satel manual)



General Settings

Here you can define informations about the zone, link camera, camera layouts and layouts for individual cameras.

