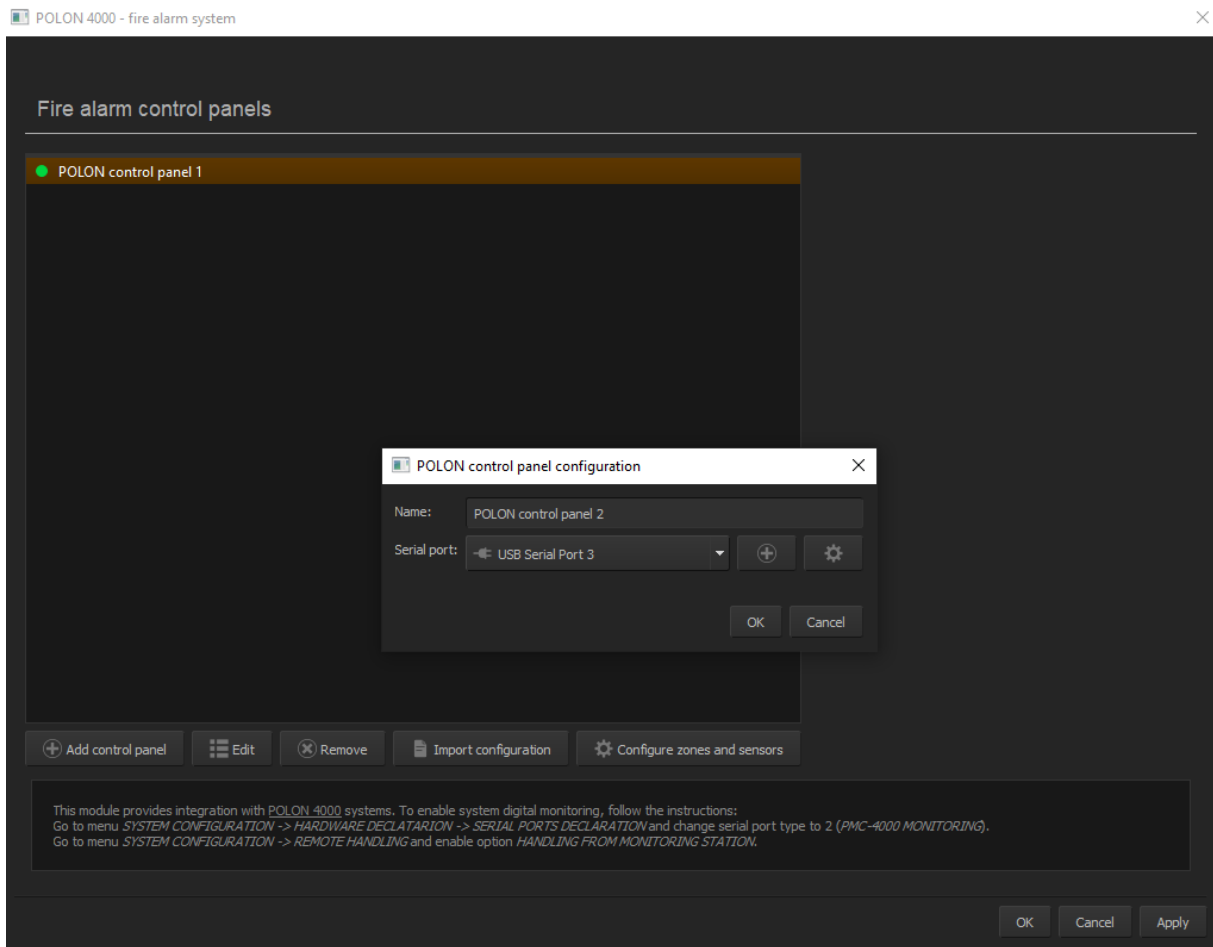




Polon Integration

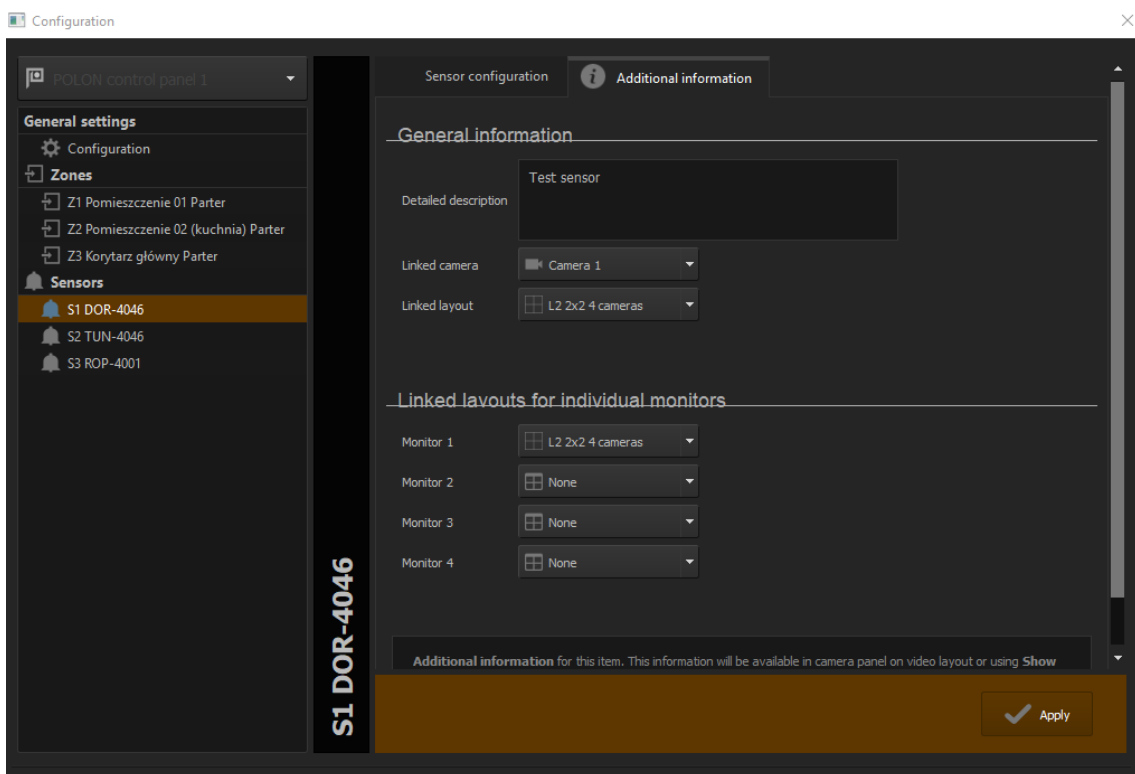
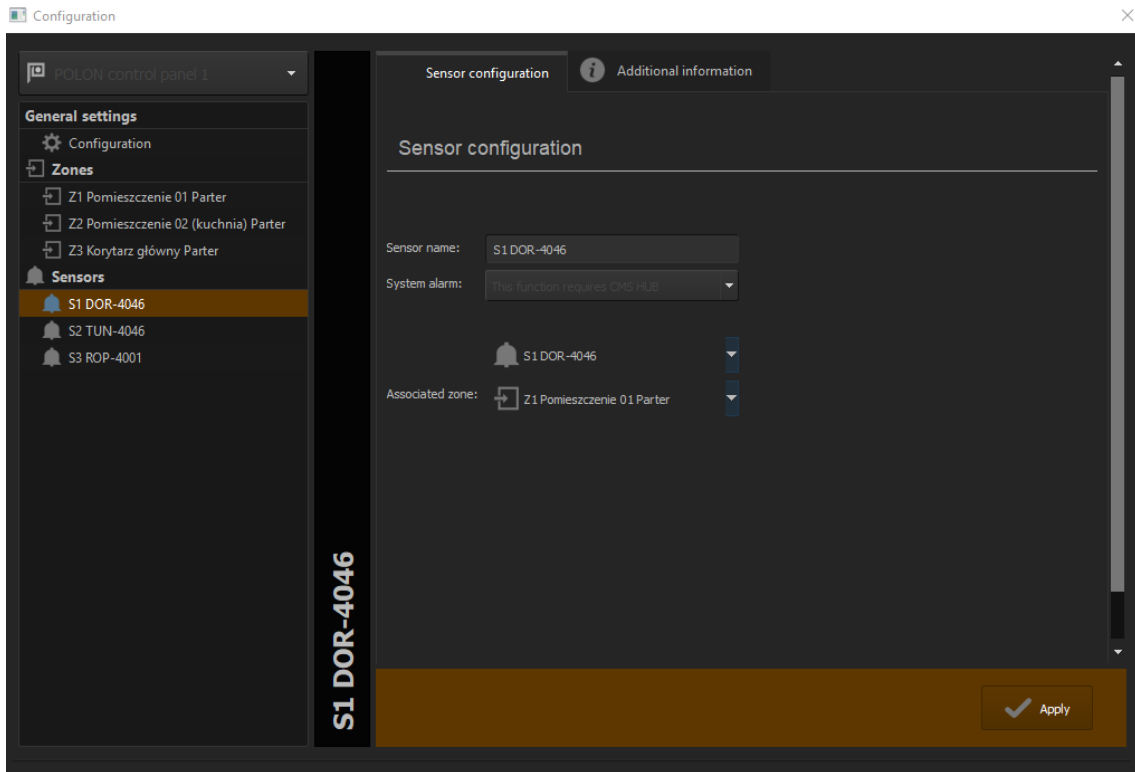
Quick Start Guide

Polon Fire alarm system

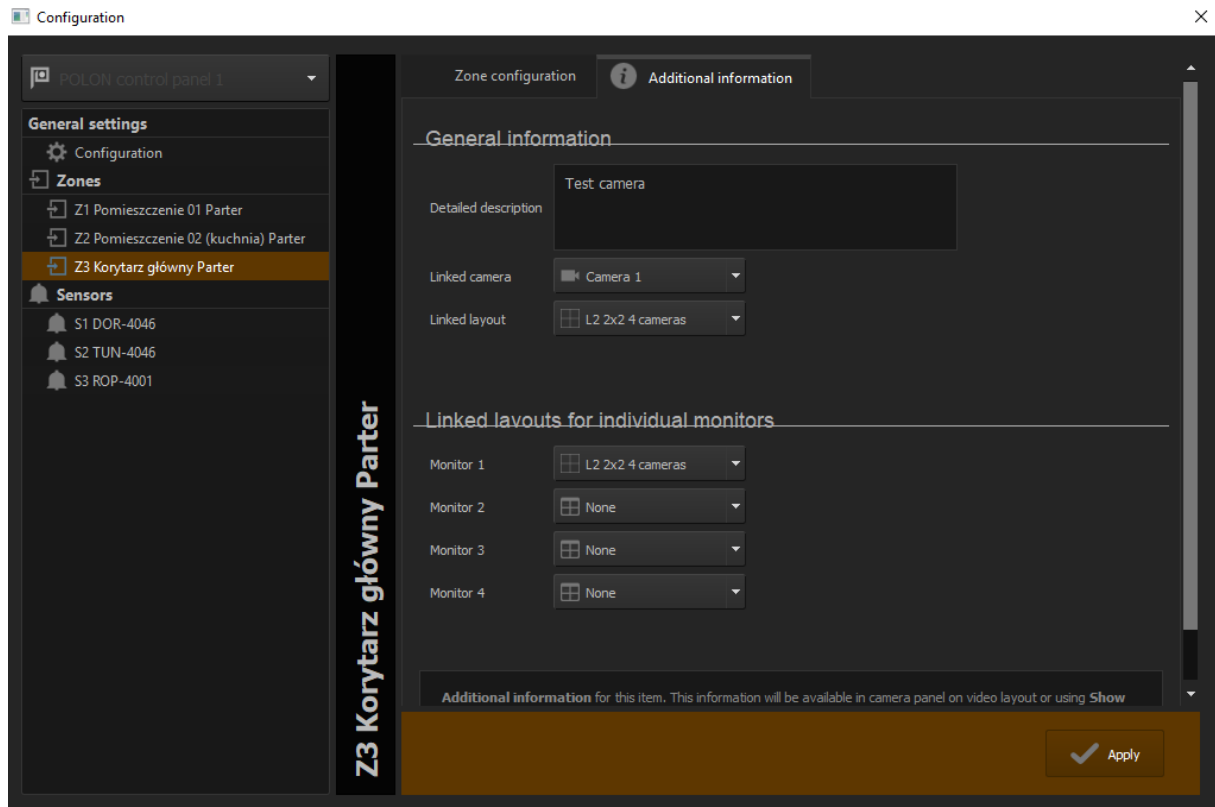


Same as Satel, Polon can be added to NetStation, it needs to be plugged with RS232 or USB to RS adapter. According to manufacturer USB is preferred. In the central unit you have to enable remote control and port has to be declared as PMC – 4000 Monitoring

After adding module, you have to import configuration generated from Polon software in XML.



In Sensors you configure sensor name, associated zones and linked layouts.



In general information you can configure Layouts and Cameras connected with this alarm zones.