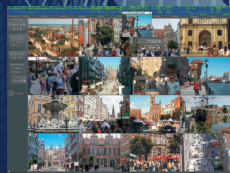




# CMS Professional:

Advanced Powerful Remote Client Software



## System overview:

- Multi monitor support,
- Multi server connection support,
- Remote servers status monitoring,
- Advanced remot archive files support,
- Up to 64 cameras on one screen,
- Advanced PTZ control,
- I/O control,
- Multi level e-maps,
- Automatic bandwidth control,
- Advanced digital zoom,
- Local recordnig support,
- Multi layout support,
- Back-up function,
- Multi stream suppot,
- Export evidence,
- Audio support,
- Advanced user accounts administration,
- Easy to use GUI.

CMS Professional is an advanced client application that works in conjunction with NetStation and NetHybrid Servers. The software provides the capability of remote monitoring both one location and large systems consisting of several hundred servers no matter the distance between them. Expanded support for eight monitors makes the CMS application suitable for advanced monitoring stations in an inexpensive and fast installation.

A special synoptic table is able to check up to a 1000 NetStation/NetHybrid server simultaneously with full reporting capability. Advanced functionality allows the operator to have quick access to all the basic functions necessary for everyday use. Specially designed system of dynamic video optimization allows the CMS application to stream multiple cameras effectively using low bandwidth consumption. This type of solution is extremely useful with servers that record using Mega-Pixel cameras. Each client application has the capability of recording video streams from Alnet servers, creating a redundant backup in case of server damage. Recorded streams can be easily accessed through the Archive module, which contains all of the same functions that are available on the server. The advanced timeline allows for a quick and effective way to search for events in the recordings, and bookmarks help facilitate the marking of events to be watched at a later date. If the event needs to be exported, it can be easily done using the backup/AVI function.

