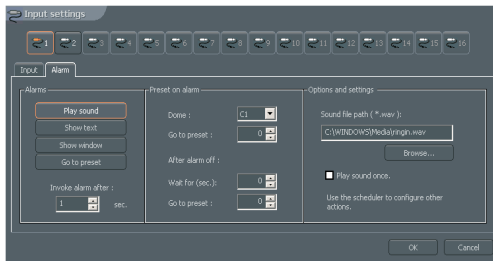


To make any CCTV system function correctly, a precise system of predefined times and actions is required. Included in the NetStation software is a very advanced scheduler with a multitude of options available to control all functions.

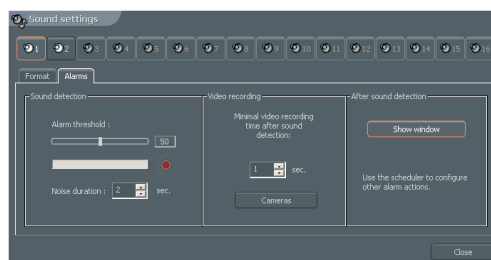
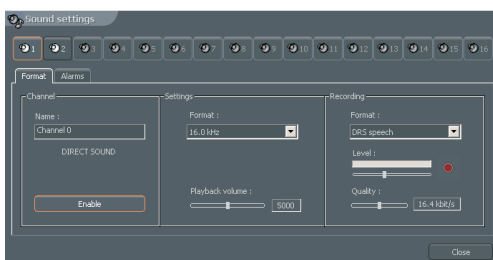
All camera recorded events, sound events, system alerts and even inputs and outputs can be specified to do specific options such as turn on recording, send output, connect to client, and emailing notifications.

The connecting to remote client function is especially useful as no one is able to constantly monitor a CCTV System, and this would automatically show someone what action is happening and where.

The scheduler is based on a 24/7 system where any time frame can be specified to run on set times and events.



The control of Digital Inputs and Outputs is a seamless process, as a number of programmed events can be programmed to be invoked based on specific inputs. Functions as moving a PTZ camera to a preset, start recording and controlling outputs, can be invoked using a simple input such as a motion sensor, doorbell or any other input.



Extended sound channel control is a strong feature of the NetStation software. It is possible to record up to 64 audio channels from IP cameras. Recorded sound can easily be browsed in the archives alongside with video recordings. Recording based upon sound detection is useful as it allows to record whole events even when motion is not necessarily detected. Tools for sound detection allow the precise tuning of all parameters available for sound e.g. quality and volume.

