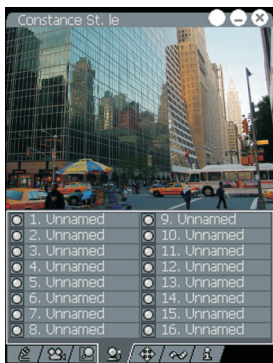


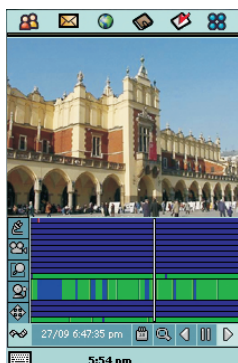
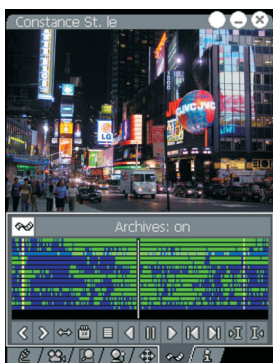
Main window includes all information about connection with remote server such as name of the viewed camera, server address and display speed (fps). It is possible in the bottom part of the screen to adjust compression level and display speed. These parameters provide precise description of picture quality to transmission speed.



The CMS Mobile application used unique solutions of dynamic window which allows for observing only fragments of camera pictures.



Outputs / Inputs includes full list of discreet inputs / outputs installed on the server site, indicators near description show their state. Outputs are capable of controlling functions remotely such as: light swithes, gates and doors.



Archives - advanced archive recording allows for unusually advanced browsing of recorded video. The unique time line provides a fast and precise way for users to find precise events. Fast scrolling and bookmarking additionally improves usage.



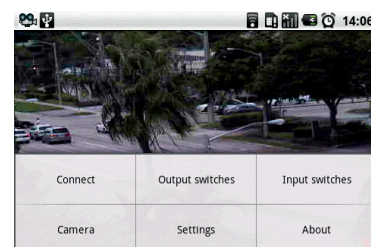
This eliminates the problem with non-typical display sizes, which is not convenient for visual monitoring. Observed terrain can be moved in an easy way without brakes in transmission.



Cameras include actual lists of all installed cameras on server site. Red indicator near camera description informs when motion is detected and this definitely improves use.



PTZ Control includes full set of tools for remotely steering of PTZ domes. Operator can manually steer in all directions or he can use available presets from a list in order for quick transfer to positions programmed earlier. On manual steering it is possible to choose one out of three speed reactions of PTZ dome which is useful on connections with low bandwidth. Additionally manual Zoom +/- option helps with precise tuning of the dome.



CMS Mobile application is available for free and it operates with NetStation and NetHybrid systems made by Alnet Systems company.